



WATERLINES

Digital Newsletter of Sovereign Harbour Residents Association



No. 64 February 2026

Rajendra Pisavadia

Welcome to the February issue of *Waterlines*.
Best viewed on a tablet, laptop or PC,
or when printed.
Feedback by email welcome to:
waterlines@shra.co.uk

Our thanks to the companies below for their
generous sponsorship of SHRA and
Waterlines in 2026.

If you are interested in becoming a sponsor
with an annual donation to help our work
please contact us at: info@shra.co.uk

Contents

News from SHRA	2
Caroline Lynam	4
SHRA Committee Member	5
Bingo and Biccies	6
Yacht Club Milestone	7
Discounts for SHRA Members	8
Dog Control & Behaviour	9
Do you Know This Painting?	10
Book & Creative Writing Group	11
Coastal Management Scheme	12
News from the Yacht Club	14
Community Drop-in	15
Harbour WI	16
Wellbeing Wheels and Walks	17
Harbour Friends	18
Sovereign Harbour Photo Club	20
Eastbourne Local Lottery	21
Community Centre News	22
Easter at St Richard Church	23
Graphic Design Work	24
Green Room Productions 'Two'	25
The SHRA Committee	29

Please consider printing copies of
Waterlines to hand to neighbours who
may not use the Internet.

GINGER & SANDERS
EST. 2012
PROPERTY MANAGEMENT,
LETTINGS & SALES

"Passionate about property"

01323 701702 | www.gssalesandlettings.com

185a Langney Road, Eastbourne, BN22 8AH



AP-it

Your local friendly I.T. Service

Computer and Laptop
repairs for Residential and
Business clients...



01323 887894 - 07900 473134 - www.ap-it.co.uk

UPTONS
Sales and Lettings

**We understand how important
finding the right home is**

From our family to yours, we're committed to you...

www.weareuptons.co.uk | 01323 914533



When reading Waterlines online in a web browser,
links from the PDF file may not open in a new
window or tab. If that happens, to return to
Waterlines press the "back" button of your browser,
or download the PDF to your device. Also, try
holding down the [Ctrl] key as you click the link, or
click the link by pressing the mouse wheel.



News from SHRA

The Annual Rentcharge

The SHRA has written to Premier Marinas and the CIC asking once again for greater clarity regarding the Harbour maintenance costs. As we go to press, we are still awaiting a response from both Premier and the CIC.

With the 2026 invoices now arriving and showing a 16% increase we are determined to have a more detailed breakdown of the charges and costs provided in future invoices.

In December, our MP, Josh Babarinde OBE, raised a question about the annual rentcharge in Parliament. Click the following link to watch a video with the Minister's response... www.facebook.com/reel/1398428135200733

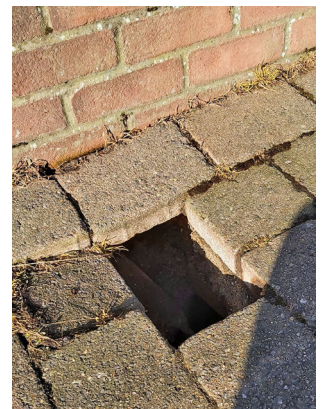
We also wrote to Galloways (previously Plummer Parsons) who issue the Rentcharge invoices following complaints from members that they were not being responded to following queries sent to them by email. A link to our letter is on the [SHRA website home page](#). Galloways replied and apologised for any delays in responding to homeowners, stating that they have been working through a backlog and that their response time to emails is currently 28 days. They also said that homeowners that have been waiting for longer than 28 days, should contact them again as their email may have been missed. If you have still not received a reply, please contact Galloways again.

Harbour Improvements

We were invited to a meeting with our MP and Premier Marinas mainly to discuss improvement works to the area on the Eastbourne side of the locks. Premier Marinas has committed to review and improve the area by the Spring once the current maintenance work is complete. Premier Marinas has also committed to meet regularly with the SHRA in order to discuss future plans and expenditure.

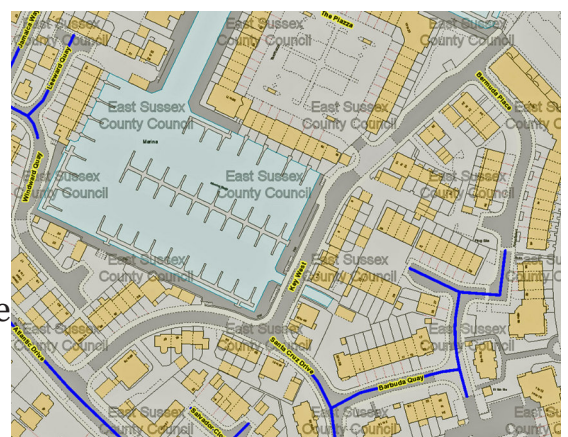
Key West

Residents from The Piazza, South Harbour, asked us who they should contact about a hole in the footpath near the Key West bridge. Since the Key West road (and parts of Santa Cruz Drive) remain unadopted, we couldn't say for sure. The image below from the [ESCC interactive map](#) shows adopted roads marked in blue - the bridge is over an outlet from the South Harbour where the "Key West" wording is on the map image.



SHRA have raised the adoption issue several times with East Sussex Council in the past. They have stated that the original developer, Westbury Homes, never entered into an adoption agreement, so when Persimmons took them over, they inherited the situation. The council said they were discussing adoption with Persimmon, but couldn't give a timescale - this was three years ago!

We have written to Persimmon to inform them of the hole and to ask whether they are responsible for the repairs on Key West. They have auto-replied saying they will respond within 3-5 working days.



Maris View Care Home

The 66-bed care home on Pacific Drive built by LTN Care Developments Ltd is almost complete and is due to open in March. It is being marketed as 'Maris View' by its operator, Crystal Care. They intend to create up to 60 local jobs.

Harbourside House

The 57 McCarthy Stone retirement apartments are being marketed as Harbourside House and are due to be completed later this year.

Both of these new developments are now seeking registration of interest.

"Smugglers of East Sussex" Event

SHRA organised a very successful and well attended talk in the Yacht Club last week. Local historian Philip Elms entertained us for nearly an hour with tales of East Sussex smugglers. Around 100 people attended and enjoyed the entertainment. It was a lovely way to spend a winter afternoon and we intend to host more of these events going forward – if anyone has suggestions for suitable guest speakers, please let us know.



Santa Stroll

SHRA once again assisted [Defiant Sports](#) in running the Santa Stroll around the Harbour on Sunday 14th December. We had to postpone for a week because of the weather but attendance was still very good and £325 was raised for Defiant Sports. **A video of the event is on YouTube** www.youtube.com/watch?v=rH3NcNv3otU

We look forward to seeing more residents next year.



SHRA AGM – New Date

The SHRA Annual General Meeting, traditionally held in May, has been re-scheduled to Thursday 10 September 2026 due to key members of the committee being unavailable during May. Our Annual Report, accounts and further details will be circulated to members nearer the time.

Meet the Beat

There is a 'Meet the Beat' session (to talk to the local PSCO) **from 11am – 12 noon on Saturday 21 March** outside 4 Seasons Brasserie, Sovereign Harbour.

Councillors' Surgery

The Ward Borough and County Councillors hold a surgery from **10am – 12 noon on the 3rd Saturday of each month at Rustico** in Sovereign Harbour (so, next ones are on 21st Feb and 21st March).

SHRA Committee Information

At the end of January, we said goodbye to resigning committee member Caroline Lynham our Membership Secretary who joined us in 2020 and has been a pivotal member of the committee (see a further write up below). Caroline will be sadly missed; however she will still be running the Sovereign Harbour Community Centre. Mandy Cox took over the role of SHRA Membership Secretary from 1st February.

Our congratulations to SHRA committee member, Keith Bateman, who has been voted in to be Commodore of the Sovereign Harbour Yacht Club – we wish him well for his coming year and look forward to closely working with him.

Caroline Lynham Ta ta

I have known Caroline for almost 6 years now and all I can say is what a 'mad Irish woman' she is 😊. (I know she won't mind me saying that!)

Despite this fact, she joined the SHRA in 2020 with a little persuasion from me knowing that she would be a great asset to the SHRA. And indeed she certainly has been, along with being a great friend – we buddied up in lockdown as Caroline was on her own having recently purchased a home in the Harbour after we previously met in London the year before.

At the end of January 2026, Caroline will sadly be leaving the SHRA committee to concentrate on personal family matters and her other hat - Bookings Secretary and other roles for the Sovereign Harbour Community Centre (SHCC) which she has been involved in from its conception. The SHRA has worked on many projects with Caroline in conjunction with the SHCC and will continue to do so.

Caroline instigated a new membership system in 2022 which has very much streamlined our membership now and is much easier for us to see exactly how many members we have and how many properties membership relates to. Caroline worked closely with Tony Smith on improving the SHRA membership database and introduced the MemberMojo system we now use. On the committee she worked across all areas with great gusto on issues such as Site 7.

Caroline has certainly left her mark at the Association and will be very much missed by the whole committee, and by the members that she has come to know over the years. We wish her well and all the best for her onward endeavours.

Carol Collier

Deputy Chair/Treasurer/Secretary





SHRA Committee Member

Amanda Cox (Mandy)

I'm the newest member of the SHRA Committee after joining in September 2025 and will be taking on the role of Membership Secretary this month.

I'm also a volunteer at the [Sovereign Harbour Community Centre](#), helping out with the administration of the booking system, answering email enquiries, and showing potential hirers around the Centre. You'll also always find me selling bingo tickets on the first Tuesday of the month.

I was born in Uxbridge, Middlesex and decided to leave school just before my 16th birthday with "O" levels and GCSEs. I later went to night school (college) to gain further qualifications.

My last job was working at KP Snacks (McCoys & Tyrrells crisps, Hula Hoops, Skips, KP Nuts to name a few of their famous brands) as a qualified Chartered Accountant for 25 years. During that time, I was fortunate to make many friends, with whom I still keep in touch.

My partner, Peter (who I met online 12 years ago) and I, moved to Eastbourne Harbour in May 2024, after we took early retirement.

I have two grown up children, Emma and Peter. Emma is a teacher and is working at a private school in Dubai. Peter works locally in Eastbourne as a Quality Assurance Manager. He and his partner, Holly, have two beautiful girls Ella and Evie. The grandchildren make me feel young again, although not so much when I'm trying to get up from the floor after playtime.

After regularly visiting Eastbourne at weekends, we decided to relocate here to be nearer the family.



My interests include golf, hiking, exercising at the gym or jogging along the Coastal Path or around the Harbour. I also enjoy cooking, going to concerts and the theatre, and travelling. I used to play for a ladies' football team and broke my wrist whilst in goal! I also broke my leg when I jumped off a horse!

My partner and I are keen supporters of the England Football Team and have experienced following them at the Qatar World Cup and the Euros in Germany. We are looking forward to going to the USA for this year's World Cup.

For the last 20 years I have been canvassing to support Cancer Research UK, raising over £25,000 through sponsorship and organising charity events.

Continued from page 5

The photo above was taken whilst on my way into London to walk an overnight Marathon in 2013. I've now completed the [Shine Marathon](#) 8 times. It is harder than you think, I regularly walk long distances but throw in the overnight element and it's exhausting.



If you see me around, please stop and say hi, I'm always happy to talk. Or maybe pop into the Community Centre on the first Tuesday of every month for Bingo and Biccies (the more who play, the more we pay). Thank you for taking the time to read about me.
Mandy

A colorful poster for a bingo event. At the top left, a hand holds a bingo card. The word "BINGO" is written in large, bold, colorful letters with a starburst effect. Below it, the text "Join us for a chat, a cuppa and some fun" is written in a playful font. The main title "Bingo & Biccies" is in a large, blue, cursive font. Below that, it says "The First Tuesday of Every Month". The ticket price is listed as "£8.00 for a book of 10 Games" and it includes "intermission refreshments (Cash preferred. Thanks)". The event is for "Over 18's Only". A list of times is provided: "Doors Open 1pm", "Eyes Down 2pm", "Intermission with a Cuppa and a Biccie 3pm", "Eyes back down 3.30pm", and "All done by 4.30pm". A note states "All Proceeds go into the prize fund and the ongoing upkeep of the Community Centre". At the bottom left, there is a cartoon illustration of a smiling man and woman playing bingo. At the bottom right, there is a detailed illustration of a plate of biscuits, a cup of tea, and several bingo balls. The SHCC logo and address are in the top right corner, and the Sovereign Harbour Community Association logo is at the bottom right.

SHCC
Sovereign Harbour Community Centre
www.sovereignharbourcommunitycentre.com
The Crumbles, Pevensey Bay Road
Eastbourne, BN23 6JH

BINGO

Join us for a chat, a cuppa and some fun

Bingo & Biccies

The First Tuesday of Every Month

£8.00 for a book of 10 Games
Includes intermission refreshments
(Cash preferred. Thanks)

Over 18's Only

Doors Open 1pm
Eyes Down 2pm
Intermission with a Cuppa and a Biccie 3pm
Eyes back down 3.30pm
All done by 4.30pm

All Proceeds go into the prize fund and the ongoing upkeep of the Community Centre

Sovereign Harbour Community Association



Sovereign Harbour Yacht Club Celebrates Major Milestone and a Bright Future

October 2025 marked a landmark moment for Sovereign Harbour Yacht Club, as the Club proudly celebrated the full repayment of its mortgage—an achievement that reflects years of careful stewardship, strong leadership, and the continued support of its members.

Established in 1997, Sovereign Harbour Yacht Club has grown into a thriving, all-year-round hub for sailing and social life, now boasting a membership of over 990 members. The modern and spacious clubhouse, opened in 2006, is widely regarded as one of the finest on the south coast, offering superb facilities in a stunning waterfront setting.

Renowned for its warm, welcoming, and inclusive atmosphere, the Club extends a friendly reception to both UK and continental visitors—a reputation consistently reflected in glowing reviews. The clubhouse is also an increasingly popular venue for private functions of all kinds, from elegant weddings and corporate events to birthday parties, anniversaries, celebrations of life, and social gatherings.

With flexible event spaces and panoramic harbour views, Sovereign Harbour Yacht Club is well suited to daytime and evening functions, whether it's a relaxed daytime reception, a formal dinner, or an evening celebration. The Club offers tailored event options, professional staff support, and a welcoming environment that allows hosts to create memorable occasions to suit their needs. Competitive pricing and a stunning waterfront setting make it an attractive choice for both members and non-members alike.

In 2025, the Club further enhanced its on-the-water offering with the purchase of its own sailing boat, giving members and guests the opportunity to book to sail with the Club's competent and experienced crew, making sailing accessible and enjoyable for all.

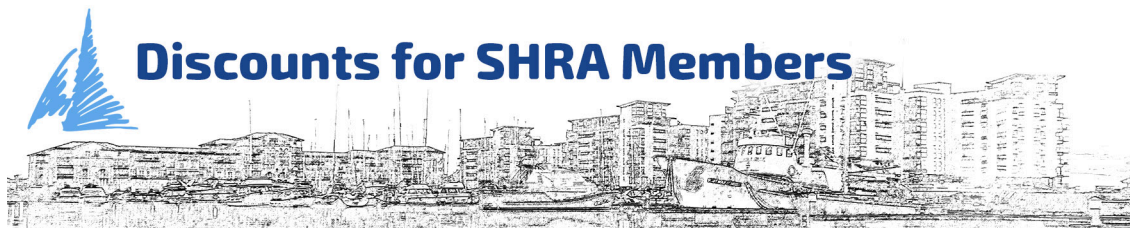
Throughout the year, Sovereign Harbour Yacht Club runs a packed and varied calendar of events, including competitive racing, cruising, social evenings, quizzes, and themed nights. A strong sense of community lies at the heart of the Club, supported by a dedicated team of staff who ensure that every member and guest feels genuinely welcome.

Whether you are a seasoned sailor, new to boating, or simply looking for a friendly and vibrant social club by the water, Sovereign Harbour Yacht Club continues to go from strength to strength and comes highly recommended by its members and visitors alike.

Membership of the SHRA is open to all households in owned or rented residential property located within the Sovereign Harbour estate, and owners of such residential property. The annual membership fee is £5 per person.

Join now online at:
www.shra.co.uk/join

Sovereign Harbour Residents Association
Annual Membership
Receive discounts from numerous local businesses and restaurants
£5
Per person per year
Join on-line with PayPal
www.shra.co.uk/join



The businesses listed below have kindly agreed to offer a discount to SHRA members **on the production of a valid SHRA membership card**. Please support these local businesses.

If you are a local business who would offer a discount to our members, please email us: info@shra.co.uk

Please note that any discount is offered at the discretion of the proprietors (i.e. there is no right to a discount). A typical discount is a 10% reduction. Terms and conditions may apply (e.g. only to food or eating in, and/or only on certain days or for a limited number of persons).

- **Active Days Mobility Services** - Repair and maintenance of mobility devices such as scooters, powerchairs, wheelchairs, hoists, riser recliner chairs, pressure care equipment and profiling beds. 01424 532620 www.activedaysmobility.co.uk
- **AP-it** - Computer health checks, repairs, upgrades and data backup. Tel: 01323 887894 www.ap-it.co.uk
- **Beamers Fresh Fish, Quay Fisheries shop**, The Fishing Quay, offer 10% off the total price. All fish is sustainably sourced with some fish caught from our own boat, *Shannon LI 547*. Open every: Tues - Wed - Thur - Fri 9am - 3pm. Sat 9am - 1.30pm. Check out their Facebook page for the latest catch news... www.facebook.com/profile.php?id=100063627992105
- **Boatshed Eastbourne** - Boat Sales. 10% off brokerage through Sussex's most highly rated yacht brokers. 079200 22540 timkingston@boatshed.com www.eastbourne.boatshed.com Visit our office in the main Boat Shed.
- **CoCo Hair** - Hair and beauty salon. 16, The Waterfront. They also require proof of a Sovereign Harbour residential address. 01323 471147 www.cocohair.co.uk
- **Curry Leaf Restaurant** - 8 Susans Road, Eastbourne, BN21 3HA. On eating-in food costs only. Tel: 01323 727900 www.just-eat.co.uk/restaurants-curry-leaf-old-town
- **Listening to You** - Counselling for Individuals, Couples, Families, and Young People (with particular experience of working with Secondary School Students). £20 discount for SHRA members. Tel: 07976 399 998; e-mail: tory@listening-to-you.co.uk; website: www.listening-to-you.co.uk.
- **Osteopathy** - Michael Woodleigh BSc Hons (Osteopathy) offers this therapy, which is non-invasive and highly effective. Michael offers SHRA members a free initial consultation. For details, please contact Michael on 01323 767228 or visit: www.eastbourneosteopath.co.uk
- **Pablo's Restaurant** - The Waterfront, Sovereign Harbour, BN21 3HA. On food costs only for no more than four persons. Telephone: 01323 470400. www.pablos-eastbourne.co.uk
- **Sovereign Harbour Community Centre**. - SHRA members will receive a 20% discount from Meeting room and Hall hire bookings for their personal use* To take advantage of the discount complete our on line booking request form www.sovereignharbourcommunitycentre.com/how-to-book and let us know your SHRA Membership number (it's on your membership card). *It's not applicable for business or commercial events they wish to hold.



Dog Control and Behaviour



[The Public Spaces Protection Order relating to Dogs on Leads](#) currently being displayed around Sovereign Harbour shows the expiry date of November 2023. However, Eastbourne Borough Council has extended the Protection Order until November 2026, but not updated the signage.

For the benefit of all residents and visitors alike and to avoid any confusion, when the new order is issued by Eastbourne Borough Council, if possible, it would be good to upgrade the order to a 'Permanent Public Spaces Protection Order' and to include the wording to 'Always keep dogs on leads and under control in all parts of the Harbour'.

I have been a professional dog trainer for over thirty years and have been requested to highlight and gently remind dog owners/walkers of the need to keep our furry friends under control whilst in public spaces and within the environment of Sovereign Harbour.

As a resident of the Harbour, for just over six years, I have seen a significant increase in the number of dogs and different varieties of breeds in and around the Harbour.

Taking our dogs for a walk around the Harbour is generally a pleasant and friendly experience, but please be aware that not all people like dogs, and indeed there are some who are anxious, scared and even allergic to dogs. A chance encounter with even a lovely friendly dog that is on or off the lead can cause a great deal of anxiety to that person. This in turn can very quickly turn into easily avoidable confrontation.

To highlight this, I have been involved on two occasions recently where dogs were inadvertently out of the control of their owners.

Firstly, sitting on the rocks by the Martello Tower on North Beach with my brother who clearly falls into the category of definitely not liking dogs. We were enjoying that days sunshine, and putting the world to rights, when we were joined by a dog fresh from having fun chasing a ball in the shallows of the sea. The owner was doing her best to rejoin her dog but not before this very nice dog decided to shake itself dry all over my brother, needless to say, a brief exchange of heated words ensued.

Secondly, in North Harbour, I was accompanying my neighbour on a short walk following her recent full knee replacement. My neighbour was using two crutches at the time, and clearly visible, we were walking close to the railings.

A lady, whose dog was on an extending lead and roughly eight to ten metres ahead of her, was walking toward us, the dog was freely exploring the walkway from one side to the other, obviously this cute little dog was not under any direct control from the owner.

You can guess what happened next, the lovely dog decided to join us, unfortunately the long-extended lead got entangled around my neighbour's legs taking her off balance and causing her to stumble, causing a great deal of unnecessary pain.



A firm but polite request was put to the owner to control her dog and move it away only to be told "You shouldn't be here where people walk their dogs." Not the response we were expecting! Both of these incidents could have so easily been avoided.

The point to all this is, and I'm sure that you will agree, that as a responsible dog owner/walker our dogs should be under our control at all times regardless of where we are or what we are doing. But also, when walking your dog on a long or extending type lead around the Harbour then please keep them closer to you and therefore considerately under more control.

Next time you are out with your little buddy have them walk closer to you; this is good for communication and control but also makes you fully aware if your dog leaves you an accidental package on the footway to be cleared up appropriately!

In the next edition of *Waterlines*, I will cover some aspects of Dog Behaviour.

Keith

Harbour Houndz

Do You Know This Painting?

SHRA received the following request. May I please request your assistance? Since you are in the right vicinity, I think you might be able to help. I am trying to spread the word locally about the search for information about a painting, once owned by a Sussex resident; we don't know whom.

It depicts Herstmonceux Castle near Hailsham and was done in 1916. It is almost certainly by Sir Winston Churchill, and so it may be quite important to local history!

It probably stayed in the area until 2022, when it finally resurfaced in Ardingly at an antiques fair. However, its authenticity can't be proven until we figure out where it has been for the past hundred years. It has not traveled too far, though. And I feel there is a chance that somebody might still recognise it.

This is the same painting that was formerly on the BBC 'Fake or Fortune' programme, but the investigation was inconclusive.

Please email any information to

Emily Esser

herstgarden@gmail.com

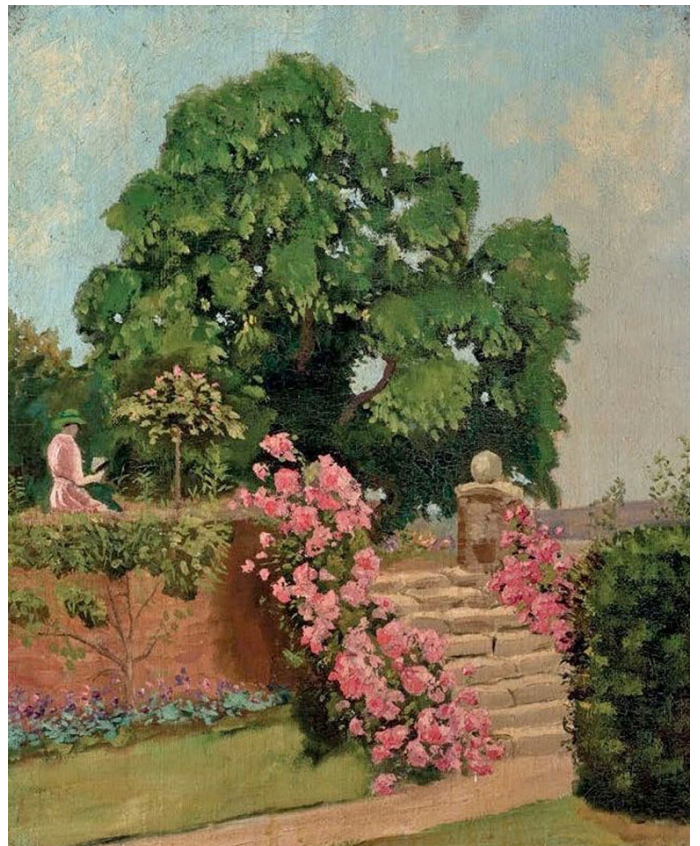
Portrait & American Folk Art Specialist

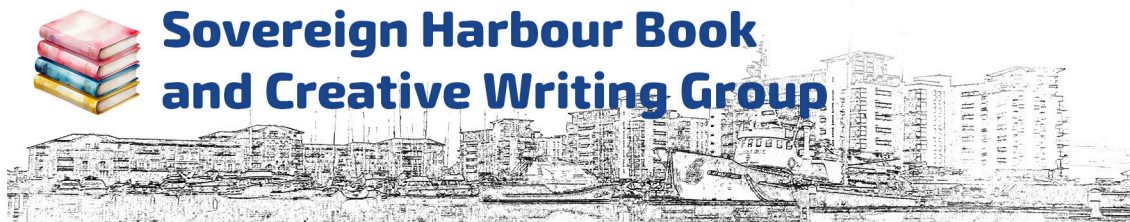
Princeton '18 Art & Archaeology

New site: [Lost Content from the National Gallery of Art](#)

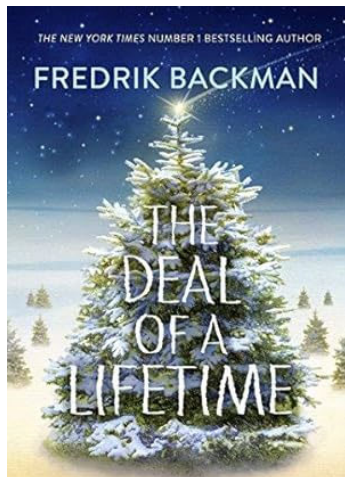
Blog/Website: [Paintings Worth Looking At](#)

Browse the [American Folk Portraits Wiki](#)





The steady growth of group numbers over the year was marked with most of them turning up for what was a very enjoyable Christmas meal, provided by our hosts in the Yacht Club. We were not neglecting our duties, as we had already enjoyed our regular routine with a good round of criticism and reading.

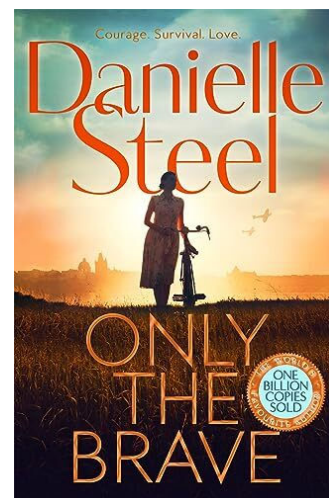


The book choice was 'Deal of a Lifetime', translated from a novella by Frederik Backman a Swedish author. Some had read this slim volume in a single sitting, but its clever characterisation and the evolving plot made it a book to leave the reader thinking with what it contained – and also what was omitted. It was all open to interpretation, but having landed on one explanation, it was left vague enough to realise there were alternatives. It was an impressive piece of writing that engendered much discussion.

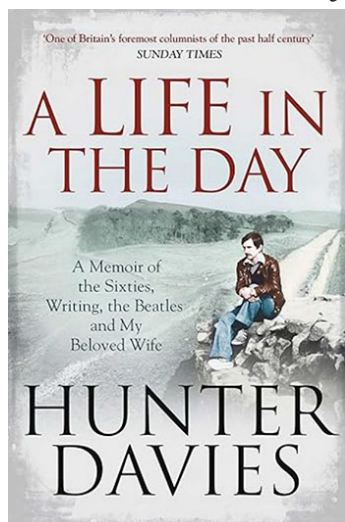
Our own efforts were applied to 'Tinsel and Turkey', familiar Yuletide themes to be dealt with as writers saw fit. Inner poets were revealed and there were generous helpings of cynicism with the adoption of 'Bah Humbug' mode in some quarters. Our reading sessions are never boring.

Our 16 January meeting was something of an education as the chosen book was 'Only The Brave' by Danielle Steel, an author surely familiar to even the most cursory bookstore browser in the last twenty years.

Reading the book generated a sense of disappointment among most of us. For such a feted writer, it was a surprisingly poor effort and even more surprising that the publishers, who must make considerable sums from Ms. Steel's efforts, should allow it to be sold as a finished product. Yes, it was a real eye-opener!

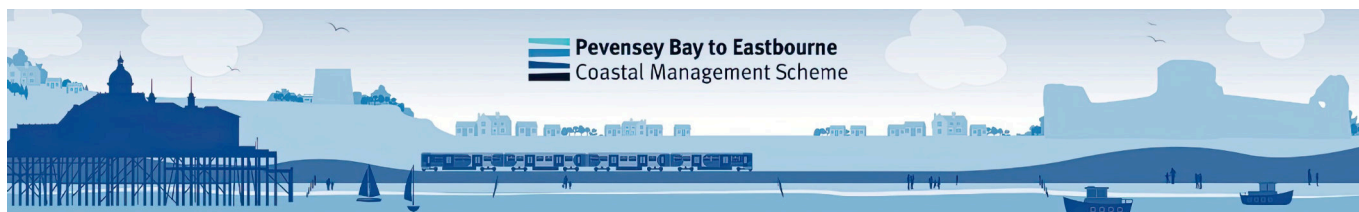


With a nod towards the passing of the Winter Solstice, our writing topic offered the broad church of 'Longer Days'. As ever, imaginations spread far and wide with a selection of short stories and a couple of treatments of the subject in verse.



The next meeting is on **Friday, 20 February, 11-00am in the Yacht Club Members' Bar**. Book is 'A Life In The Day' by Hunter Davies, writing topic 'I remember Valentine'. Someone from the group will be meeting and greeting at the Clubhouse door. The next gathering should be 20 March, but that has not been confirmed.

Anyone who cares to join our regular mid-month sessions is welcome, even if you just come and listen. To find out more, try Brenda (ejbowersuk@gmail.com) or Alan (alanturner38@btinternet.com).



Pevensey Bay to Eastbourne Coastal Management Scheme. What's been happening and what's next

Short-term (2025-2027):

It's been a very busy winter on the beach, with multiple large storm events in December and January. We've been on the beach day and night, sometimes seven days a week, working hard to keep you safe. We would very much like to thank everyone who sent kind words of support and for your patience during these important works.

At the time of writing, we have just experienced Storm Goretti. We had been monitoring the weather closely and were well prepared, having rebuilt the beach following the previous storm.

Storm Goretti brought large waves and strong winds alongside an overnight high tide, which led to a reduction in beach crest width along the frontage. The team responded at first light to carry out repairs. As this work must be done during falling tides, it can sometimes require activity outside normal working hours. We continue to appreciate the understanding and support shown by the community when these essential repairs are required.



Looking ahead, we are planning a shingle bypass in February, followed by a shingle recharge in March. These works will help strengthen the beach ahead of future storms and form part of our ongoing programme of coastal maintenance.

These winter storms continue to highlight the challenges we all face from our changing climate. This is exactly why we are planning and preparing for future phases now.

To stay informed and prepared, we strongly encourage residents to:

- Sign up for Environment Agency flood warnings: www.gov.uk/get-flood-warnings
- Subscribe to Beach Manager email updates through our short-term works page: www.pevenseyandeastbournecoast.co.uk/short-term-phase-2025-2027

Signing up means you'll receive timely updates during severe weather and coastal events.

Medium-term (2027-2037):

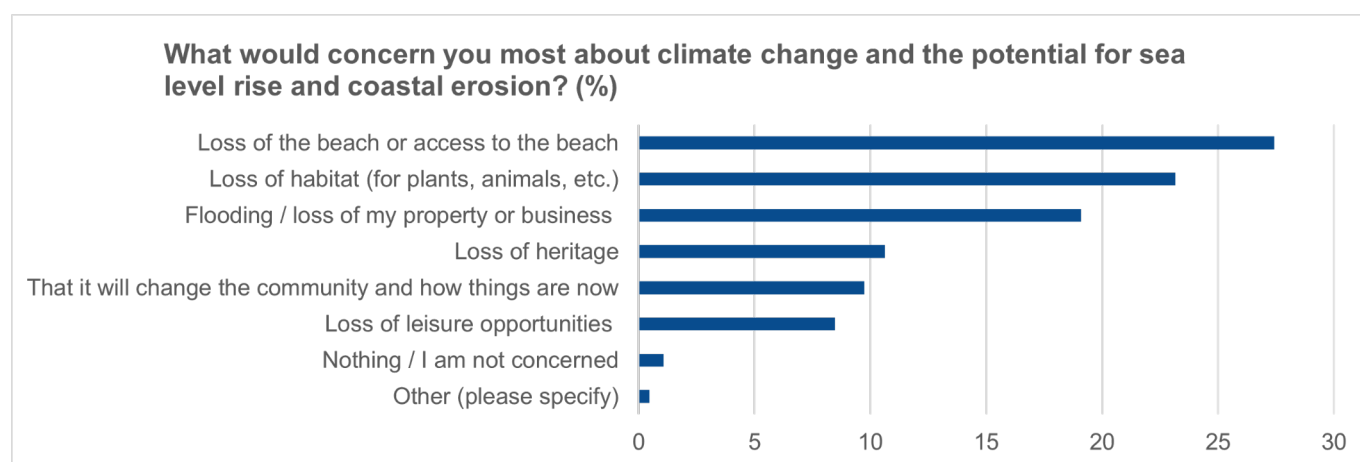
The Phase 1 project remains on track to take over from the short-term works in 2027. We're busy with everything from design work and computer modelling to environmental reports and getting the licences we need. Landscape consultation will start soon, focusing on enhancing accessibility, celebrating local heritage, and strengthening natural habitats.

Don't forget - your area has a community representative on the Pevensey Bay Coastal Community Group. The members are well informed and up to date on the latest project news. You can find out more on our website: www.pevenseyandeastbourne.co.uk/stakeholder-engagement

Long-term (future phases from 2037):

Thank you to everyone who took part in our recent survey - we had over 1,000 responses! Your feedback has given us valuable insight into how people use the coastline today, your hopes and concerns for the future, and how aware people are of our plans. It also helps us understand the best ways to keep communities involved. You can view a summary of the findings on our website: www.pevenseyandeastbourne.co.uk

Here's a quick snapshot from one question:



We've also made an important decision: rather than continuing work on a 100-year strategy document, we're starting early development of a large complex coastal management project from 2037, called Phase 2. This is because the case for future investment is so strong.

In the meantime, technical studies are underway to guide future phases. This includes modelling to show how long the beach can continue to act as a flood defence.

Community engagement will remain a priority, and we'll be in touch when it's time to get involved in the long-term again.

Further information and contact details:

Visit our webpage to subscribe to our newsletter:
www.pevenseyandeastbourne.co.uk

You can also follow us on social media:

Facebook: 'Pevensey and Eastbourne Coast'

Nextdoor: 'Environment Agency- Solent and South Downs'

X: 'Environment AgencySE'

Or email us: pevenseyandeastbourne@environment-agency.gov.uk



Sovereign Harbour Yacht Club News



It has been a couple of busy months at the Yacht Club. Our festivities began with Singo Bingo with DJ Rod, a Christmas Craft Fayre and an Xmas Jumper Disco.



December fun started with two fabulous Sundays of Christmas lunches in the Royal Sovereign Suite, a Children's Christmas party with Ben Bamboozle and his Punch and Judy magic show. Santa arrived on the Harbour Tour boat much to the children's delight as they watched from our balcony.



Just before Christmas we had a fabulous evening with The Princess and The Peas - an Indie covers band. Blondie, Garbage, Eurythmics, Transvision Vamp, Suzi Quatro, Billy Idol, Radiohead, The Cranberries, The Primitives, Manic Street Preachers, Kaiser Chiefs and The Cult were some of the artist covers they performed.

Continued from page 14

2025 ended with a New Years Eve Party with the super talented, fun-loving Jamie Sowdon.



In January we held our annual AGM where we elected some new directors; a new Commodore, Keith Bateman; a new Vice Commodore, Bob Lawrence; and we will hopefully be electing a new Treasurer next month. So exciting times ahead.

We wish all Harbour Residents a healthy and happy 2026.

Ros Saunders
Communications Officer





Report of January WI Meeting.

The first meeting of 2026 was on a cold, wet, grey day and the lift to the second floor was out of order! In spite of this, 47 members, 3 new members and one visitor were welcomed by President Diane Beere.

There were two speakers; the first was Mimi Bogelund telling members about 'The life changing magic of tidying up!' Mimi is a professional organiser. She goes into people's homes and reorganises their possessions. She started when she was made redundant from her job and read a book by Marie Kondo who invented a simple method of organizing called KonMari.



The method suggests that you dispose of anything that you no longer like or use and only keep things that are relevant or give you joy. This should be done all at once and in a certain order to gain 'Inner Calm.' Mimi demonstrated how to fold clothes and put them in small boxes to take up a third of the space. The discarded items could then be recycled, donated or sold.

The next speaker was Dottie Proietti from ESFWI who brought along a table full of jewellery to be sold in the break. The jewellery together with donations such as mobile phones, tablets, sat navs, cameras, watches, postcards and currency are collected and sorted by Dottie to recycle through auction houses and dealers for sale to raise funds for ACWW ([Associated Country Women of the World](#)), the national WI supported charity that funds education for women's projects all over the world. Dottie showed illustrations of projects such as the Romanian Seed Project and African women being taught about 'smart' agriculture. The charity is all about making sure females have education.



During the tea break, as well as buying Dottie's jewellery, members bought tickets for the Annual Meeting of the ESFWI which is being held in the De La Warr on the 24th March 2026 with Charlie Dimmock from Love Your Garden as one of the speakers. They also signed up for Craft Club on the 19th January, Lunch Club at the Beachy Head Hotel on the 20th January and the Family History Club on the 26th January. The 4th Tuesday Coffee Morning is on the 27th January at Seasons.

A vote was taken after tea for the five Resolutions to be put forward at the NFWI Annual Meeting. Each Resolution was read out by a Committee member and the numbers were counted. The results were 20 in favour of Accessible Toilets, 12 for Every Child Needs a Friend, 10 for Women's Homelessness, 3 for Love Your Vulva and 0 for Nearer to Nature. The results will be compiled nationally.

President Diane Beere asked for volunteers to be 'Fairy Godmothers' in their areas. The idea is to be available to run errands, or help in other ways if a member has a problem. Sue Boyd will be coordinating the scheme. Diane also reminded members that Judy Latter is collecting 'anything orange' to put in the basket that is donated to be sold at the ESFWI Annual Meeting to raise funds.

Continued from page 16

The next meeting is on the 9th February at 2pm in the Sovereign Suite of the Sovereign Harbour Yacht Club. The speaker is Fern Lulham with her dog Nancy and she will be talking about 'What life is like when you are blind'.

Information on the Harbour WI can be found on the SHRA website: www.shra.co.uk/wi

Weekly, Wellbeing Wheel and Walks

This year, we've expanded and updated our Wellbeing Wheel & Walk provision. Wellbeing Wheel & Walk is a free weekly social stroll through a predetermined route to help you get out the house, stay active and have a chat with some friendly faces.

We've now launched an additional weekly session called "Wellbeing Wheel & Walk: Quiet Session" which emphasises having a slow, peaceful experience on your wheel & walk. This session has taken over the previous location of Eastbourne's lovely Sovereign Harbour, whilst our original has moved towards town, taking place along the seafront near Fishermans Green. Please see the details for each session below:



Wellbeing Wheel & Walk: Quiet Session **Day: Every Thursday**

Time: 11am - 12pm (dependant on speed of wheel & walkers)

Meeting point: Outside 4 Seasons Brasserie,
3 The Waterfront, Eastbourne, BN23 5UZ

Price: Free

Wellbeing Wheel & Walk **Day: Every Thursday**

Time: 12:45pm - 1:45pm
(dependant on speed of wheel & walkers)

Meeting Point: Fishermans Green Tennis Courts,
Royal Parade, Eastbourne, BN22 7LH

Price: Free

Interested in giving it a go? Join the *Wellbeing Wheel & Walk* WhatsApp group chat to stay in the loop: <https://chat.whatsapp.com/HsIN6RVKDqx2ztfwPVy21q>

Got some questions? Give us a ring on 07887 755856 or drop us an email at info@defiantsports.org.uk

We hope to catch you at one of our sessions soon!

Freya Lock
Comms, HR & Admin Manager
<https://defiantsports.org.uk>

Continued from page 18

We were very pleased to be given such positive comments from members that attended these events and we are pleased to announce that we will be running them again for Christmas 2026.

Members are now looking forward to our full 2026 special events programme, which commenced with the very well attended Variety Cash Bingo event on Wednesday 28th January. Members were able to enjoy some diverse versions of Bingo, to include Hoy, USA, Killer and Music types.

Following on from that, on **Tuesday 17th February we will be having another session of New Age Kurling** and then our very special **21st Anniversary Celebration Party on Wednesday 25th February**, with the brilliant local party singer Mr Guy Sunshine.

On **Wednesday 11th March we have our groups AGM** and straight afterwards we have **impressionist Mr Tony Harris back and this time as Margaret Thatcher.**

Next up will be a trip over to **Brighton Greyhound Stadium** for a meal and a flutter on **Sunday 29th March**

Events then continue in April, with a **Video Race Night on Wednesday 8th** and the history of **Magic with Marko on the 29th.**

We also have numerous other special events already in the planning stage to include Croquet, Tenpin Bowling, Vineyard Trip, Cheese Tasting, Quizzes, Singers, Coach Trips and more.

When we do not have a special event on a Wednesday evening, just a few of our members can meet up for a chat and a drink (sometimes a meal) in the normal yacht club bar. As we share that bar with yacht club members, it is important that anyone considering joining contacts us first before coming along.

If you have been considering joining us, or are just new to the harbour and would like to meet other residents and enjoy special events and trips, then why not make this your New Year resolution. To contact us please use the contact form on our website at the following address: www.harbourfriends.co.uk

We will be hosting a **special new members night** in February and we only have a very few places still available for new members. Please do get in touch as above to find out more.

Finally, just a reminder that we have our very own Facebook page showing pictures from events. Please do take a look and give us a like and a share at the following web address: www.facebook.com/harbourfriends

That is about it for now and I wish you all the best for the year ahead.

Dave Hawkins
(HF Publicity Officer)



Well 2026 has arrived and we must start by saying a big happy new year to you all.

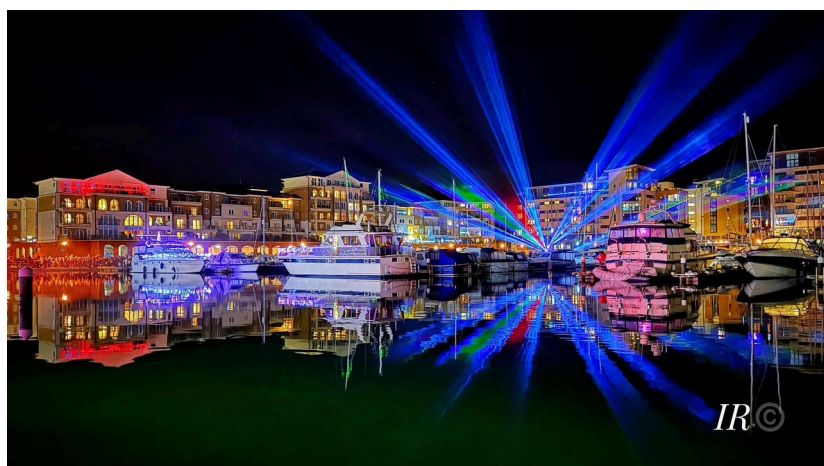
Our club finished up in December 2025 in style (as always), on the 16th, with a Christmas social event, where we can chat about the years activities and just about anything really, totally enjoying each others company with a drink and some snacks, (that are kindly brought along by our members), and as usual it was a fantastic evening. A couple of pictures below were taken for posterity, including a special presentation of a "luminary award", for Margo Smith, who always keeps us entertained and smiling through the year.



We had a three week break over Christmas, but that didn't detract us from announcing our December challenge winners for "smart phone" and "camera". All pictures in this category must have been taken in the current month. Viewers of the pictures on our facebook site and our good friends 'Eastbourne Photographers Hub', site, can register a "like" against their favourites and the ones with the most likes in each category are the winners and posted at the head of our Facebook page during the following month.

Decembers winners were: Izabela Rickett, with a smart phone shot of the sovereign Harbour laser light show, Kevin Claxton, with his camera shot of a sparrow:

There are always plenty of great pictures to view on our Facebook page ([Sovereign Harbour Photoclub UK](#)). Take a look !



We were back in business on 13th January meeting at 7pm for a social and drink followed at 7.30pm reviewing our weekly challenge pictures, which kicked off with a topic of "starting with 'P'". An example below from Izie featuring a "Pineapple".

As always we must thank the Sovereign Harbour Yacht Club for their support through the year and allowing us to be an integral part of the activities available to Yacht Club members.

I must also thank my 'Co-committee' members, Izabela Rickett, Dave Clare, Rajendra Pisavadia and of course our club President George Fisher, for their support and organisation throughout the year.

SHYC Membership is equivalent to around £2 per week per person, (so an absolute bargain), to access not only the photoclub but ALL the multitude of activities and entertainment offered by Sovereign Harbour Yacht Club throughout the year.



If you are interested in photography, albeit only using your smart phone, come along and say hello on a Tuesday evening or e mail me at: shpcuk@outlook.com

Apart from friendly critique of our weekly pictures, we also have regular tutorials on all aspects of photography as well as photoshoots out and about in our area, and some very experienced (and indeed, ex professional photographers) in our group who are more than happy to share their knowledge with everyone. It's a win win!

Hope to see you soon
Bob Stanborough (secretary)
SHPCUK



Eastbourne Local Lottery is an exciting weekly lottery that raises money for good causes in Eastbourne. All good causes supported by the lottery will benefit Eastbourne and its residents.

Tickets for the lottery cost just £1 per week, with a top prize of £25,000!

A weekly draw takes place every Saturday night.

Match all 6 numbers and you win the JACKPOT!

From every £1 ticket you buy, 60p will go to local good causes in Eastbourne and improving our community.

Visit the secure website to sign up:
www.eastbournelocallottery.co.uk

It was a busy Christmas at the Sovereign Harbour Community Centre and we would like to thank everyone who came along to the Christmas singalong on 23rd December. Eastbourne songstress Joanna Rose Barton took us through the classic Chrimbo tunes and the mulled wine and mince pies went down a treat. It was a full house, and we received over £100 in donations which we will use to supply the monthly drop in café.



2026 will see us continue our monthly **Bingo & Biccies** event on the first Tuesday of every month. Doors open at 1pm and its 'Eyes Down' at 2pm. We will also open up the '**Community Drop In**' on the first Tuesday of the month from 10am to 2pm (just before the Bingo starts). Tea is £1 and Coffee £2, so if you fancy a cuppa drop in.

2026 Bingo and Community Drop In Dates

Tuesday 3rd February

Tuesday 3rd March

Tuesday 7th April
(Easter Monday)

Tuesday 5th May

Tuesday 2nd June

Tuesday 7th July

Tuesday 4th August

Tuesday 1st September

Tuesday 6th October

Tuesday 3rd November

Tuesday 1st December

All our usual hirers have kicked off their 2026 activities and sessions. Check our website for details: <https://www.sovereignharbourcommunitycentre.com/proud-to-host>

We were sad to hear from Miranda who runs the monthly Crumbles Food & Craft market that unfortunately they will not be returning in March after their winter break. We will keep you updated with new events.

Discount for SHRA Members

The Community Centre exists as a result of the hard work and dedicated lobbying of Eastbourne Borough Council, by the Sovereign Harbour Residents Association. It was a rocky road to get the building built and handed over to community use and since then the SHRA have been huge supporters and sponsors of various events at the centre.

Continued from page 22

In recognition of all this support and encouragement SHRA members will receive a 20% discount for meeting room and hall hire bookings that are for their personal use.*

To take advantage of the discount complete our on line booking request form: www.sovereignharbourcommunitycentre.com/how-to-book and let us know your SHRA membership number (it's on your membership card).

* The discount is available to SHRA members booking and paying for their own private events. It's not applicable for any business or commercial events they wish to hold.



St Richard of Chichester

Langney & Sovereign
Harbour Parish Church



**JOIN US FOR
EASTER**

**DETAILS WILL APPEAR ON OUR
WEBSITE AND FACEBOOK PAGE
WWW.STRICHARDEASTBOURNE.ORG.UK**

Graphic Design Work

The colourful posters for Community Centre events and SHRA's Smugglers talk, and the Harbour's refurbished information boards, were designed by Harbour resident and SHRA committee member, Raj Pisavadia. They have been much admired. Raj is able to take on further graphic design and photo restoration work. Please contact him for further details and quotes: sonikart9@gmail.com



TWO

by Jim Cartwright

Two actors. Twelve lives. One unforgettable night at the pub.

"A sharp, salty, quickfire evocation of the surface gaiety and underlying melancholia of English pub life" ~

The Guardian

4 Mar—7 Mar

Eastbourne

7:45pm

13 Mar—14 Mar

Lewes

7:45pm

Bookings

To book online please visit the Green Room website below, or

Call: 077100 42937

Price

£15 per ticket

Follow us

 thegreenroomp

 The Green Room Productions



The Green Room Productions presents

TWO

written by Jim Cartwright

"A sharp, salty, quickfire evocation of the surface gaiety and underlying melancholia of English pub life" ~ The Guardian

Step inside a northern pub where the beer flows, the banter crackles—and every corner hides a story.

Jim Cartwright's award-winning Two is a sharp, funny, and deeply moving snapshot of pub life, told through the eyes of a landlord and landlady who bicker behind the bar while serving a colourful cast of locals. Over the course of one evening, we meet lovers, loners, dreamers and drinkers—all portrayed by just two actors in a compelling and seamless series of transformations.

Beneath the laughter and lively chatter, Two explores love, loss and the quiet heartache that hides in plain sight. A bittersweet night out that's as rich in pathos as it is in pints.



Daveys Lane,
Lewes. BN7 2BQ



High Street
Eastbourne. BN21 1HH

TheGreenRoomProductions.co.uk



You should confirm the information below before attending any meeting or event.

SOVEREIGN HARBOUR BRIDGE CLUB



Our duplicate bridge sessions are every Tuesday and Thursday, in the first-floor bar of the Sovereign Harbour Yacht Club. Please arrive by 13:00, for a prompt 13:15 start. Hosts are provided, so a partner is not necessary.

We extend a warm welcome to both experienced and novice players. We are a very social club with members often partaking in activities together including having a drink in the bar when our bridge finishes at 5pm.

Please visit our website for more information.

www.bridgewebs.com/sovereignharbour/

EASTBOURNE VOICES COMMUNITY POP CHOIR



Eastbourne Voices Pop Choir rehearse every Monday evening at 7pm in the Sovereign Harbour Community Centre. This uplifting choir encourages people of all abilities to sing, with no music-reading or auditions required, and rehearsals are always fun and relaxed.

This community choir boasts more than eighty members each week, including a good number of both men and women, many of whom are from the Harbour community. Come along and enjoy a free trial session!

For more information, please visit: www.eastbournevoices.co.uk

PEVENSEY BAY SAILING CLUB



Friendly, family orientated dinghy sailing and windsurf club, 10 minutes walk along the beach from the harbour. General sailing, training at all levels and regular club racing and social events.

We welcome beginners and experienced sailors alike and we sail at weekends and on Tuesday & Thursday evenings in the summer. Our clubhouse offers hot food and a bar at the weekends, and a sun terrace with stunning views over the bay to Bexhill and Hastings.

Do come and have a look round the club at any time or contact the membership secretary by email:

membership@pbsc.eu Website: www.pbsc.org.uk

SOVEREIGN WARD COUNCILLORS SURGERY

The County and Borough Sovereign Ward councillors hold a surgery on the third Saturday of the month between 10.30am to 12.30pm in the *Simply Italian* restaurant on The Waterfront.

HARBOUR FRIENDS



Harbour Friends is a social group of Sovereign Harbour residents, both singles and couples, who want to meet other residents, have fun and enjoy new experiences. Most of our social events are held in the function room of the yacht club on Wednesday evenings, but we also have off-site events and trips that can be on any day.

Our special events are open to members only, so why not join us for just £20 per year. When we do not have a special event on, members are able to use the main bar of the yacht club for a drink or food on Wednesday evenings from 7pm. More details about our events can be found on our Facebook page: www.facebook.com/harbourfriends For further information or to contact us, please visit our website at: www.harbourfriends.co.uk

HARBOUR WOMEN'S INSTITUTE



The Harbour Branch of the W.I. meets on the second Monday of the month at 2.00pm in Sovereign Harbour Yacht Club. It also has a Craft Club with separate meetings, a Family History Club, a Lunch Club and a monthly Coffee Morning.

If you are interested in taking part, please contact Frances Harrap on: 07914 603548

Website: www.shra.co.uk/wi

MARITIME VOLUNTEER SERVICE



The Maritime Volunteer Service (MVS) is a charity organisation which aims to promote seamanship and maritime engineering for the young and old alike through local units around the country.

Training nights are held every Tuesday evening at 19:30 in the new MVS unit within the Boat Shed.

New members are always welcome, but give us a call first so we can organise for someone to greet you. For more information, [visit the MVS website](http://www.maritimevolunteer.org.uk) or [E-mail MVS](mailto:info@maritimevolunteer.org.uk) or Tel: 01892-853500.

SOVEREIGN HARBOUR RESIDENTS ASSOCIATION FACEBOOK GROUP



SHRA posts occasional news items and information on our Facebook pages: www.facebook.com/groups/354333463873512

SOVEREIGN HARBOUR ART GROUP



The Sovereign Harbour Art Group classes take place on Thursday mornings at Christ The King Church Hall, Princes Road (Langley Roundabout), between 10:00am - 12:30pm.

Learn to paint with acrylics, oils, watercolours and pastels with an experienced art tutor in a friendly, relaxed and enjoyable environment.

Fees are £10 per person for each 2.5 hour session, to cover hall hire and tuition.
Annual membership fee is £6.

For more information please phone Angela on 07914 884 378 or visit the Art Group's web page: www.shra.co.uk/artgroup/

HARBOUR DOLPHINS



We are group of like minded people who love to swim in the sea and appreciate the benefits of cold water swimming. Fun and laughter guaranteed.

We meet on the North Harbour beach outside Admiralty Court at 8am weekdays and 9am weekends. New members welcome.

Whether you like to swim like an Olympian or just bob around, we cater for all. So do join us.

We are on Facebook and you can contact our admin on the number below for more information
[Harbour Dolphins on Facebook](#)

Mobile: 07710 538230

SOVEREIGN HARBOUR PHOTO CLUB



The Sovereign Harbour Photo Club UK meets on Tuesday evenings from 7pm over coffee, in the Sovereign Harbour Yacht Club. Prospective members of all abilities, from beginners to professionals, are welcome.

The objective of the club is to help our members take better photographs with a camera or a smartphone and to increase members' knowledge and ability through projects, exhibitions and competitions, supported by talks and demonstrations. Young photographers are especially welcome.

If interested in taking part, please e-mail Bob Stanborough (club secretary) at: shpcuk@outlook.com with your name and a daytime telephone number.

SERENITY DIVERS



A BSAC scuba diving club based in Sovereign Harbour, Eastbourne. We regularly dive the local wrecks, usually 2 or 3 times a week during the dive season.

Our boat is Serenity, an 8.6 metre catamaran which is a great dive platform and has a dive lift to make exiting the water easy. Members range from ocean divers to trimix qualified rebreather divers. Club subscriptions are kept to a nominal level and the only cost to dive is a share of the fuel costs for the trip.

We meet Wednesday evenings at the Yacht Club. All trained divers are welcome to call or come and meet us.

[Our Facebook page...](#)

SOVEREIGN HARBOUR BERTH HOLDERS ASSOCIATION



The Sovereign Harbour Berth Holders Association was formed in 1999 and is RYA affiliated. The Association benefits the berth holders as well as the harbour management. Membership offers discounts from local trades people, free RNLI safety courses, workshops and other courses.

Visit the website for more info: www.shbha.co.uk

THE GARDEN BAR GOLF SOCIETY



We meet once a month for a day's golf at high quality courses. Current members cover a wide range of abilities, with handicaps ranging from 6 to 28 and, although the golf is important, the social aspects of the day are equally significant.

For more information, call in to the Garden Bar at The Waterfront, Sovereign Harbour, or send us an e-mail: gardenbar@hotmail.co.uk

STREETFUNK DANCE CLASSES AT THE SOVEREIGN HARBOUR COMMUNITY CENTRE



Streetfunk dance classes are now available every Wednesday at the Community Centre.
4:30-5:30 pm for ages 6 to 8, 5:30-6:30 pm for ages 9-12, 6:30-7:30 pm for 13 years and up.

All Streetfunk's teachers are qualified, experienced, DBS checked, and covered with PLI. Book a trial or sign up today! For bookings please email: info@streetfunk.co.uk or visit: www.streetfunk.co.uk

THE GARDEN BAR SUNDAY FOOTBALL TEAM



The team plays its home games at Hampden Park, and have been champions of the Lewes and District Premiership. They have been runners-up in several knock-out cup tournaments.

For more information, call in to the Garden Bar at The Waterfront, Sovereign Harbour, or email gardenbar@hotmail.co.uk

**RESIDENTS OF SOVEREIGN HARBOUR
FACEBOOK GROUP**



An active group on Facebook with news, photos, information, events and other posts and discussions on local issues from Sovereign Harbour residents.

www.facebook.com/groups/129998750673307/

**SOVEREIGN HARBOUR COMMUNITY GROUP
FACEBOOK GROUP**



An active group on Facebook with events and commercial information from and for Sovereign Harbour residents.

www.facebook.com/groups/3184790038292777/

**SOVEREIGN HARBOUR EASTBOURNE
FLICKR GROUP**



The Sovereign Harbour Eastbourne Group on flickr is an on-line public gallery to view and upload photos of Sovereign Harbour.

www.flickr.com/groups/sovereignharboureastbourne/

**THE GREENER HARBOUR
FACEBOOK GROUP**



A Facebook Group giving a voice to all those concerned about climate change and who would like to make Sovereign Harbour a greener environment.

<https://www.facebook.com/groups/3398508230472303>

ROYAL SOVEREIGN BOWLS CLUB



Situated at the bowling greens in Princes Park, there is seating for non-bowlers and spectators around the greens. Open daily from the end of April until end of September each year.

New members, whether new to the game or who have played previously, are welcome. Please visit our website for more details

www.royalsovereignbowlsclub.co.uk

SEA CADETS, EASTBOURNE



At Eastbourne Sea Cadets we offer skills and qualifications that could take you around the world. We create a safe, engaging and fun learning environment that will give you memories and friendships that will last a lifetime.

We meet at Royal Parade East on:
Sea Cadets (12-18) Tuesdays & Fridays, 6.45 - 9.15 pm.
Junior Cadets (10-12) Fridays, 6.45-9.15 pm.
Royal Marine Cadets (13-18) Tues & Fri, 6.45- 9.15pm.
If you want to find out more about us, visit our website
www.sea-cadets.org/eastbourne/get-in-touch
Facebook: www.facebook.com/eastbourneseacadets

SOVEREIGN DIVERS



Sovereign Divers are your local dive club. We are based at Sovereign Harbour, meet in the Yacht Club and have been established for 50 years. We have a 7.2m dive RHIB, moored behind the yacht club, with easy access to our compressor and equipment room.

We welcome divers from all agencies and people new to diving. Training can be provided from entry level through to dive leader. As well as divers, we also welcome boat handlers and dive coxswains; again, training can be arranged.

If you would like to know more, please visit our website: <https://sovereigndivers.co.uk> or email: membership@sovereigndivers.co.uk

SOVEREIGN HARBOUR YACHT CLUB



We welcome new members at any time. You don't need to own a boat, but the number of social members is limited. Lots of Social functions and many other varied activities throughout the year.

We have great food and discounted drinks to our members and are the only club in the harbour selling Harveys beer!

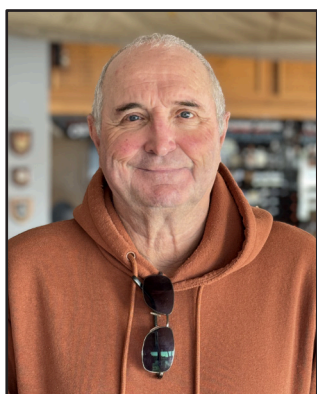
Our opening hours are:

Tues–Thurs 17.00-23.00
Friday-Saturday 12.00-23.00
Sunday 12.00-18.00

Call in and speak to Sarah to view the club.
Tel: 01323 470888 Email: membership@shyc.co.uk
Website: www.shyc.co.uk



The SHRA Committee



Dave Rogers
Chair



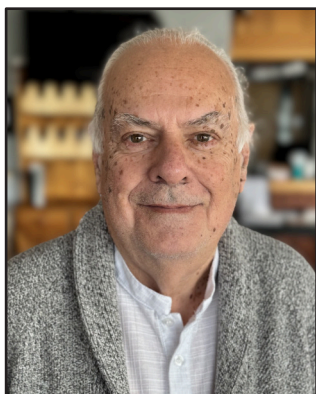
Carol Collier
Deputy Chair,
Treasurer & Secretary



Amanda Cox
Membership Secretary



Tony Smith
Webmaster &
Waterlines Editor



Keith Bateman



David Blackburn



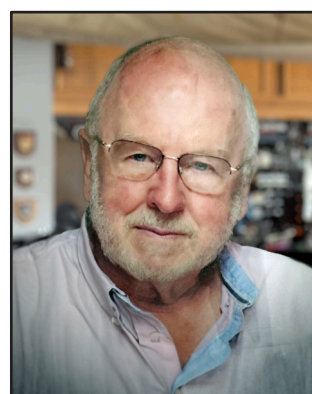
Peter Hawley



Rajendra Pisavadia



David Preager



David Shaw