



Welcome to the October issue of *Waterlines*. We hope that you find items of interest. Your comments and input to SHRA and Waterlines are always welcome.

Email: info@shra.co.uk for general issues and waterlines@shra.co.uk for Waterlines feedback.

The SHRA committee meets monthly and is:

Chair: Dilys Iverson

Membership Secretary: Caroline Lynam

Treasurer: Carol Collier

Committee Members: Darren Anstee, Keith Bateman, Penny di Cara, Frances Lawrence, Rajendra Pisavadia, David Preager, Dave Rogers, David Shaw, Iain Shore.

Our thanks to the companies below for their generous sponsorship of Waterlines for 2023



**PRACTICAL
BOAT TRAINING**

seatrainingssussex Shorebased + Online

W: seatrainingssussex.co.uk T: 01323 387141

FIRST RESPONSE LEARNING

PROFESSIONAL - COST EFFECTIVE - QUALITY TRAINING

FIRST AID AT WORK EAST SUSSEX

T: 0800 999 0100 M: 07808 964796

E: enquiries@firstresponse.co.uk



**Victoria Healthcare
Management**

Private Medical Insurance Brokers

Honest, tailored advice. Harbour based.

• 01323 301 270 • info@victoriahm.co.uk

www.victoriahm.co.uk



The Flat Specialists

Property Consultants

"Empowering you to manage your property"

Office: 01323 736422 Mobile: 07809 436818

E-mail: peter@theflatspecialists.co.uk

Website: www.theflatspecialists.co.uk

HOBDENS

property management ltd

info@hobdensmanage.co.uk

01903 724040

Specialising in Block & Estate Management since 1946





AP-it

Your local friendly I.T. Service

Computer and Laptop repairs for Residential and Business clients...

01323 887894 - 07900 473134 - www.ap-it.co.uk



Inside

Coastal Management Scheme Update	2
B&M Store Illuminated Signs	2
Site 7a (Aldi) Planning Application	3
Photos of Planning Committee Lobby	4
Meeting with Premier Marinas	5
New Information Boards	6
SHRA Provides More Benches	7
Eastbourne Voices Community Pop Choir	8
SHRA Membership Cards	8
Cooking with Faz Razeen	9
Harbour WI Meeting Report	10
Yoga at the Yacht Club	10
Wing Walk Donation to RNLI	11
Review of Polling Places	12
Half Term at The Waterfront	13
Discounts for SHRA Members	14
Sovereign Harbour Yacht Club	15
Sovereign Harbour Photo Club	16
AP Exclusiv Events at Sovereign Harbour	18
Wedding Showcase 8th October	19
Wedding Spectacular 6-7th Jan 2024	20
Community Centre Open for Hire	21
St Wilfrid's 2024 Challenges	22



GINGER & SANDERS

PROPERTY SALES & LETTINGS



2012-2022

"Passionate about property" | 01323 701702

gssalesandlettings.com

Pevensey Bay to Eastbourne Coastal Management Scheme

Project delivery continues at pace for all three phases of our programme. The existing beach management across both Pevensey Bay and Eastbourne will take us through to 2025, with the Environment Agency and Eastbourne Borough Council team busy managing this and creating a new two-year scheme to help us transition through to 2027 when the larger Phase One scheme starts.

We expect Phase One to run for 10 years and bring some exciting new approaches to beach management ensuring the coast remains resilient, protecting 10,000 homes, businesses, and infrastructure. Our longer-term programme of works then looks at how we create and manage future choices over the next 100 years considering climate change and evolving technologies.

We are currently planning our public engagement events to share the shortlist of options for Phase One, which are due to run from 20 November until 15 December 2023. Please see our project website for dates of our upcoming events and the latest information about the scheme: www.pevenseyandeastbourne.co.uk

We also now have a Facebook page! [Search Pevensey and Eastbourne Coast](#) to follow us and keep updated with project developments, including our autumn/winter engagement activities. Alternatively, scan the QR code for access to our social media channels and website:



Connect with us

B&M Illuminated Signs



B&M have made a retrospective planning application to EBC for the installation of the illuminated signs on the front, side and rear of their new store at The Crumbles Retail Park that opened in September. EBC's Planning Application ref. no. is 230607. To view full details and leave comments visit the following webpage: <https://www.lewes-eastbourne.gov.uk/article/2087/?RefType=APPPlanCase&KeyText=230607> Comments should be made by the 19th of October. Proposed determination date is 9th November.

SHRA has spoken to the manager of the store and he told us he is instructed to turn off the back signage lights when the store closes and after the staff have finished up.

Please Note that the club info below should be confirmed before attending any events.

Harbour Friends



For the uninitiated, Harbour Friends is a social group of Harbour Residents, of all ages, both singles and couples, with the purpose of building friendships and generally enjoying life on our lovely harbour.

Events are open to members only so why not join. At only £17.50 per year this is a bargain. Due to high number of current members, a waiting list may apply

Harbour Friends meet every Wednesday evening at 7.30 at the Yacht Club. For further information please visit the Harbour Friends website at: www.harbourfriends.co.uk

Rotary Club of Sovereign Harbour



The Rotary Club of Sovereign Harbour meets every Tuesday at 7:00pm for a buffet dinner in Seasons at the Sovereign Harbour Waterfront. Visitors and any prospective new members are very welcome to join us.

For more information please visit the [Rotary Club of Sovereign Harbour website](#).

Note that when reading 'on-line' in your web browser, [links](#) from this PDF version of *Waterlines* may not always open in a new window or tab. Hovering over the link and pressing down on your mouse wheel may work. Or, from a followed link press the "back" button of your browser to return to *Waterlines*; or download the PDF to your device.

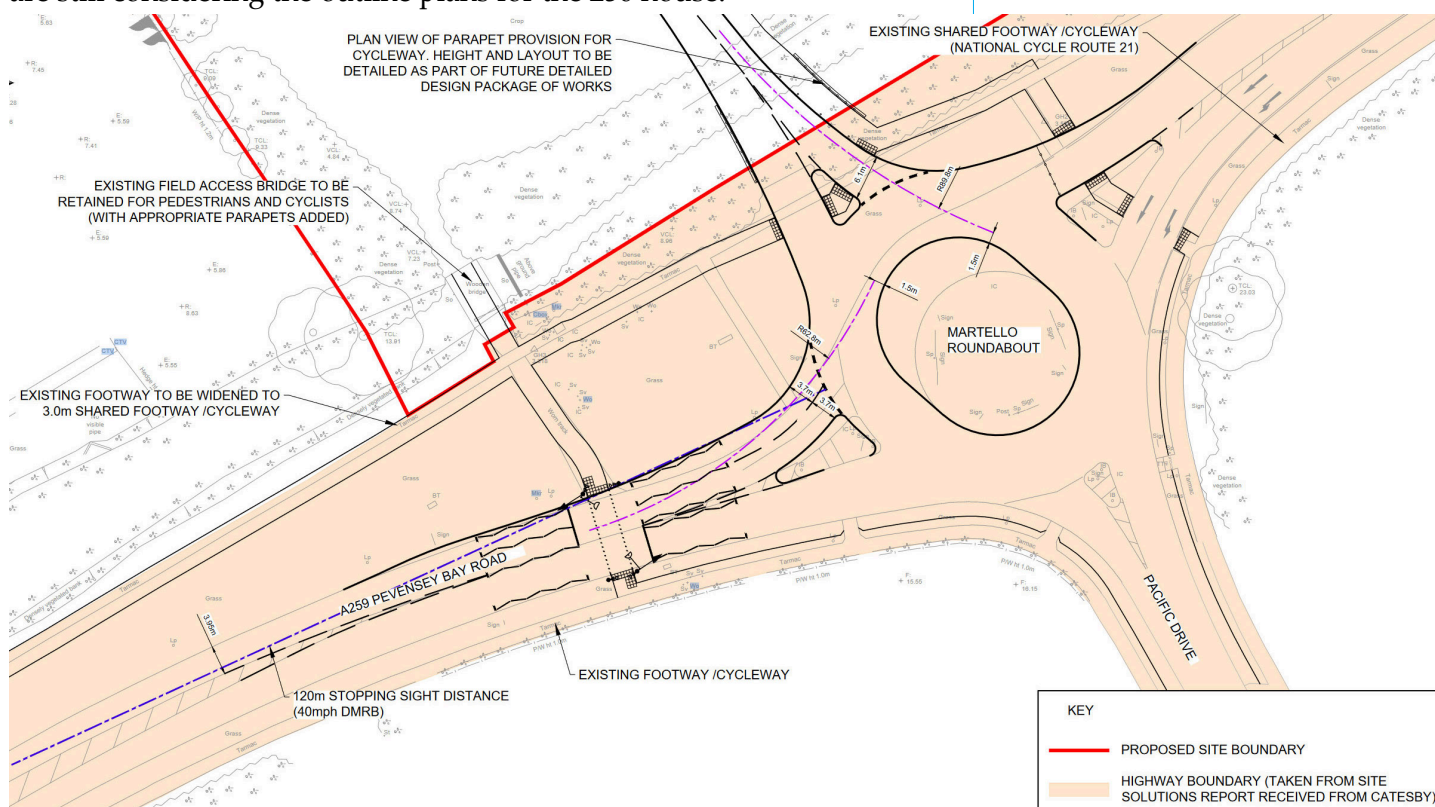
Please consider printing copies of *Waterlines* to hand to neighbours who may not use the Internet.

Site 7a (Aldi) Planning Application

Following their consideration by Eastbourne Borough Council's planning committee in August, the three Site 7a applications have been referred to the Secretary of State for Levelling Up, Housing and Communities because they are not compliant with local or national planning policies. The Secretary of State may decide to appoint an independent planning inspector to examine the applications and advise on whether they should be approved or rejected. This process, known as 'calling in' allows for further representations to be made in respect of the application and presents a new opportunity to change the course of the future for this site.

SHRA wrote to the relevant Government Minister on 11 September urging her to recommend that the Secretary of State 'call-in' the Aldi application for an independent review since it breaches national and local planning policies. We are very grateful to a SHRA member for the drafting of this letter. His knowledge has given the minister some real issues that they will/should need to consider before reaching a decision on whether to 'call-in' the application. Click here to read SHRA's letter... <https://www.shra.co.uk/pdfs/SHRA7aminister110923.pdf>

Our letter to the Minister makes mention of the more recent planning application (230526) that sought outline planning permission for the development of up to 250 dwellings on land bordering Pevensey Bay Road opposite Site 7a. This application includes the construction of a new road linking the proposed housing estate to the Martello roundabout, and changes to the size and shape of the roundabout (see below). Neither of these changes appear to have been taken into account when the projected traffic flows into Aldi were submitted as part of their planning application. At the time of writing, a decision by the Secretary of State on 'calling in' the Aldi plans is awaited and EBC are still considering the outline plans for the 250 house.



Maritime Volunteer Service

The Maritime Volunteer Service (MVS) is a charity organisation

which aims to promote seamanship and maritime engineering for the young and old alike through local units around the country.



Training nights are held every Tuesday evening at 19:30 in the new MVS unit within the Boat Shed. New members are always welcome, but give us a call first so we can organise for someone to greet you. For more information, [visit the MVS website](#) or [E-mail MVS](#) or Tel: 01892-853500.

Ward Councillor Surgeries

The Sovereign Ward councillors hold a surgery on the third Saturday of the month between 10.30am to 12.30pm in the Simply Italian restaurant on The Waterfront

Site 7a - Photos of Planning Committee Lobby

A big THANK YOU to all the residents who turned up at the Town Hall on the 21st August to lobby the planning committee meeting. Although the committee agreed that all three site 7a plans should be delegated to the EBC's Head of Planning to allow him to grant planning permission they have since been referred to the Secretary of State (see above) Photos by and © Rajendra Pisavadia.



Meeting with Premier Marinas

In the last couple of years, SHRA has established a cordial relationship with Premier Marinas and meets with their senior management on a quarterly basis. This allows us to ask the questions that our members and residents bring to our attention. The questions we asked during our September meeting included:

Environmental link on Premier website

Q. Premier Marinas website has a link to their environmental policy which advises that the key performance indicators are published – where can we find these?

A. Premier's website will be updated soon and this facility should be included.

Brown-Tail moths

Q. There's a second emergence of the cocooned caterpillars presumably because of the warm weather – is Premier intending to do anything on the Spit?

A. Premier isn't intending to take any action to dispose of the caterpillars but they are placing warning signs on the Spit and around the Harbour.



Seal information boards

Q. The permanent seal information board has been installed near the locks along with a new respite bench. The bird board is currently being refurbished and updated. Does Premier have any plans to improve that area?

A. Not currently.

Houseboats

Q. A resident has informed us (and provided a photo) that the houseboat waste is being pumped-out by hand into large cans and then carried to the toilet block – is Premier aware of this? There has also been complaint about the overflowing rubbish bins on the pontoons – how are these emptied?

A. Premier will take action to stop the houseboat users disposing of waste in this way. The rubbish bins are emptied by contractors on a regular basis and also as required during busy periods.

Fishing boats

Q. Residents are complaining about the noise from some of the fishing boats. Does Premier monitor this? Is the speed limit policed? How many boats are allowed and do they have to pay?

A. Premier will talk to boat owners if they are excessively noisy or polluting within the Harbour. There is a limit on numbers and they do pay. The speed limit only applies within the Harbour.

Continued on page 6

Sovereign Harbour Yacht Club



We welcome new members at any time. You don't need to own a boat. Lots

of social functions and many other varied activities throughout the year.

We have great food and discounted drinks to our members and are the only club in the harbour selling Harveys beer!

Our opening hours are:

Tues–Thurs	17.00-23.00
Friday-Saturday	12.00-23.00
Sunday	12.00-18.00

Call in and speak to Sarah to view the club, or contact the membership secretary, Linda Hayler.

Tel: 01323 470888

membership@shyc.co.uk

Website: www.shyc.co.uk

Sovereign Harbour Bridge Club

We hold our duplicate bridge sessions every Tuesday and Thursday, in the first floor bar of the Sovereign Harbour Yacht Club.



Please arrive by 13:00, for a prompt 13:15 start. Hosts are provided, so a partner is not necessary.

We extend a warm welcome to both experienced and novice players, we are a very social club with members often partaking in activities together including having a drink in the bar when our bridge finishes at 5pm.

Please visit our web site for more information: www.bridgewebs.com/sovereignharbour/

Electrical cables near North Harbour bridge

Q. These have become exposed again.

A. Premier will investigate. [Since then the cables have been removed]

Late night noise on the Spit

Q. Residents have complained – does Premier's security get involved?

A. Our security is mainly for The Waterfront area. Complaints should be directed to the police.

AOB

After seeing details of the proposed North/South Harbour bus link on SHRA's website, Premier has informed East Sussex County Council that the footpath and cycle track intended for this link are on land owned by Premier.

Date of next meeting - December 12th. The SHRA will continue to meet with Premier and will press them further when necessary on these and other issues.

Information Boards

SHRA recently installed a new seal information board by the locks. We are now in the process of refurbishing and updating the bird and SS Barnhill boards, the latest proofs of which are shown below. Next we will redo the flora & fauna board. The new boards have been designed by SHRA committee member Rajendra Pisavadia



Sovereign Harbour Berth Holders Association

The Sovereign Harbour Berth Holders Association was formed in 1999 and is RYA affiliated. The Association benefits the berth holders as well as the harbour management.

Membership offers discounts from local trades people, free RNLI safety courses, workshops and other courses. Visit their website for more information: www.shbha.co.uk

Sovereign Harbour Short Mat Bowls Club

If you would like to join our very friendly and social club on a Thursday afternoon at the Community Centre we would be pleased to welcome you, whether you are an established player or a new player.

If you are interested in joining us please contact the Secretary, Anne Newson, either by e-mail at newson17@live.co.uk or by phone on 01323 472259

Liz M Fitness Classes at the Community Centre

For those over 50. Liz M Fitness Classes at the Sovereign Harbour Community Centre improve your mobility, balance, co-ordination strength and fitness with a fully qualified personal trainer. Fun & friendly classes.

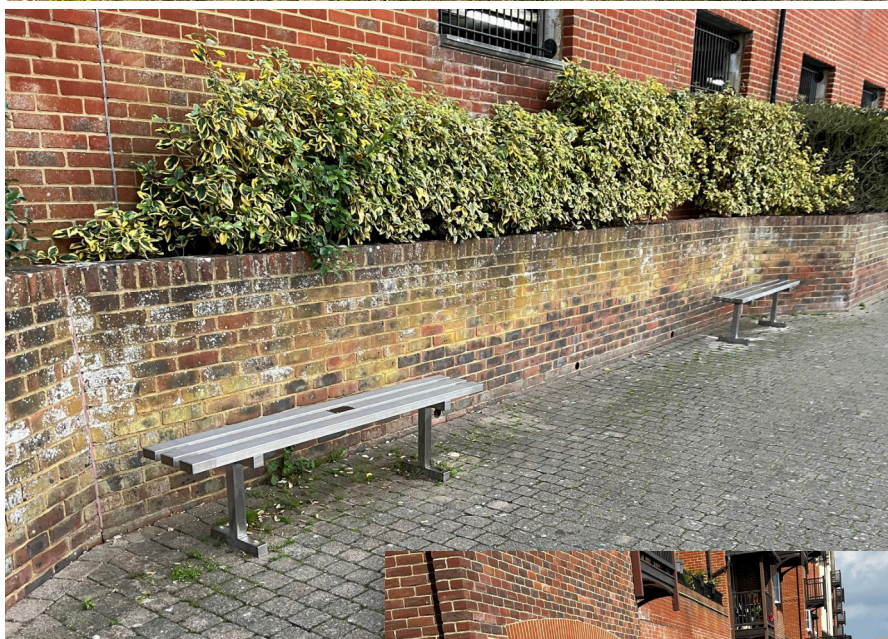
Tuesday - 10am - Intermediate Class, bring a mat.

Wednesday - 2pm - Chair Based Class.

All abilities welcome. Classes are £5 per session.

Contact me for more details & to book 07739 670905. Find me on Facebook - [lizmfittness](https://www.facebook.com/lizmfittness)

SHRA Provides Three More Respite Benches



With valuable assistance from the Sovereign Ward councillors' devolved budget and help from ESCC and Premier Marinas, SHRA have had three more respite benches installed on the Harbour walkways to join the three they installed previously. They are all proving to be popular and well used. Special thanks go to SHRA committee member Iain Shore who overcame many administrative and practical hurdles to get the benches installed.



Harbour Women's Institute (WI)

The Harbour branch of the W.I. meets on the second Monday of the month at 2:00pm in Sovereign Harbour Yacht Club. It also has a Craft Club with separate meetings.



At time we have a waiting list, but if you are interested in taking part, please contact Frances Harrap on: 01323-472649.

Website: www.shra.co.uk/wi/

Harbour Exercise Classes

Mari-Anne is fully insured with a MSc in exercise physiology, specialising in clinical exercise and exercising with cancer.

Currently, classes are held virtually on Fridays: 9.15-10.10am Pilates.

Contact: Mari-Anne Elder
Tel: 07748 678030. Email: mariandy@btinternet.com

Sovereign Harbour Social Club

The Sovereign Harbour Social Club meets every Wednesday from 10:00am to 11:30am in the Simply Italian annex at The Waterfront for coffee. There are occasional outings for lunch, theatre, places of interest. All are welcome. For further details please contact Betty Saunders on 01323-479514. Website: www.shra.co.uk/shsc

Eastbourne Voices Community Pop Choir

Eastbourne Voices Community Pop Choir were thrilled to move to the **Sovereign Harbour Community Centre** in May, and have since attracted many new members from The Harbour.

This uplifting choir encourages people of all abilities to sing as they do not use music, and **Monday night rehearsals** are packed, with over sixty members each week.

They are currently working hard towards their debut concert on **November 11th** which will be held at **All Saints Church in Eastbourne**. Tickets can be bought online: <https://www.wegotickets.com/event/592985>

If you would like further information on the choir or are interested in joining them, please visit our website at: www.eastbournevoices.co.uk



Reminder!

Now that almost all our members have been issued with the new style, white membership cards, we remind everyone that **the old style, dark blue, "Lifetime" membership cards are no longer valid as proof of membership of SHRA, nor will they be able to be used to obtain discounts.** All our discounters have been informed of this change. They will accept the PDF card as proof of membership.

You can check your membership status online at: <https://membermojo.co.uk/shra> by logging on using the email address you used when you joined SHRA. If you can't log on, perhaps because your email has changed or you've forgotten it, let Caroline, our Membership Secretary know (email: membership@shra.co.uk) and we will sort it out.



New style membership card



Old style card - no longer valid

Sovereign Harbour Art Group

The Sovereign Harbour Art Group classes resumed on Thursday mornings at Christ The King Church Hall, Princes Road (Langley Roundabout) between 10:00am - 12:30pm.

Learn to paint with acrylics, oils, watercolours and pastels with an experienced art tutor in a friendly, relaxed and enjoyable environment. Fees are £10 per person for each 2.5 hour session, which covers hall hire and tuition. Annual membership fee is £6.

For more information please phone Angela on 07914-884378 or visit the Art Group's web page at: www.shra.co.uk/artgroup/

The Haven Players

The Amateur drama group based at the Memorial Hall, Dittons Road, Stone Cross. Members include Sovereign Harbour residents.

Visit their Website for details: www.havenplayers.co.uk

The Garden Bar Sunday Football Team

The team plays its home games at Hampden Park, and have been champions of the Lewes and District Premiership. They have been runners-up in several knock-out cup tournaments.

For more information, call in to the Garden Bar at The Waterfront, Sovereign Harbour, or email gardenbar@hotmail.co.uk

Cooking with Faz Razeen

Spicy Spaghetti with Garlic Mushrooms

The pasta is usually dressed with the sauce before serving to combine with the mushroom mix to create a delicious flavour, if you prefer you can top the spaghetti with the sauce. Always serve in warmed serving bowls or plates as pasta loses heat very quickly.

Ingredients

2 tablespoons olive oil (use 1 tablespoon for the pasta)

200g spaghetti

400g bottle of ready-made pasta sauce. (Chilli flavoured sauce more than better)

200-250g pack chestnut mushrooms, sliced not too thick

2-3 garlic cloves chopped finely - but you could use as many as 4-5

½ medium onion sliced thinly

1 teaspoon of chilli flakes

½ teaspoon smoked paprika

Small bunch basil leaves

Method

Heat 1 tablespoon olive oil in a pan, add sliced onions together with mushrooms and mix well with smoked paprika and garlic, then fry over a medium heat for 5-6 mins until softened and lightly coloured. Once the mushroom mix is done, set aside until the pasta is ready.

Boil the spaghetti according to packet instructions in a large saucepan of boiling water, when ready drain the pasta and add 1 tablespoon of olive oil and mix gently, then add the pasta sauce to the spaghetti. Thereafter toss the mushroom mix and garnish with chopped basil leaves and tomatoes.



Do you remember the very long spaghetti?

Royal Sovereign Bowls Club

Situated at the bowling greens in Princes Park, there is seating for non-bowlers and spectators around both of the greens.



Open daily from the end of April until end of September each year.

New members, whether new to the game or who have played previously, are welcome. Please visit our website for more details royalsovereignbowls.wordpress.com

Residents of Sovereign Harbour Facebook Group

An active group on Facebook with news, photos, information, events and other posts and discussions on local issues from Sovereign Harbour residents. www.facebook.com/groups/129998750673307



Sovereign Harbour Community Facebook Group

An active group on Facebook with news, events and commercial information from Sovereign Harbour residents. www.facebook.com/SovereignHarbourCommunity



The Greener Harbour Facebook Group

A new Facebook Group giving a voice to all those concerned about climate change and to those who would like to make Sovereign Harbour a greener environment. <https://www.facebook.com/groups/3398508230472303>



Harbour WI Meeting Report

After a summer break in August the Harbour WI met on a very warm afternoon on September 11th.

President Jacquie Frost welcomed 45 members and a new member. She also introduced two new committee members, Bev Roberts as assistant secretary, and Nicky Clifford. Then Correspondence Secretary Daphne Chamberlain read out the correspondence from ESFWI.

The Harbour WI has several future outings. A theatre trip to see The King and I at the Congress Theatre in December, a Christmas Lunch at the Hydro Hotel on the 6th December and a trip to the Pantomime in January. A busy time ahead!



Unfortunately, the speaker for the day had to cancel at the last minute so Jacquie Frost and Daphne Chamberlain organised two quizzes that were thoroughly enjoyed by everyone.

The Lunch Club are going to Lottbridge Drove Golf Club on the 20th September and the Craft Club met at Sandie Goman's house on the 18th September for a fun afternoon being taught Macramé by member Karen Stephens. The Fourth Tuesday Club met during August and will meet again on the 26th September for coffee in Four Seasons.

The next meeting is on Monday 9th October at 2pm in the Sovereign Suite of the Sovereign Harbour Yacht Club. It will be the 16th Birthday of the Harbour WI with refreshments and a singer – Rosie Ann Page.

Information on the Harbour WI can be found on the SHRA website: www.shra.co.uk/wi

Pevensey Bay Sailing Club

Friendly, family orientated dinghy sailing and windsurf club, 10 minutes walk along the beach from the harbour. General sailing, training at all levels and regular club racing and social events.



We welcome beginners and experienced sailors alike and we sail at the weekends and on Tuesday & Thursday evenings in the summer. Our clubhouse offers hot food and a bar at the weekends, and a sun terrace with stunning views over the bay to Bexhill and Hastings. Do come and have a look round the club at any time or contact the membership secretary by email: membership@pbsc.eu Website: www.pbsc.org.uk

The Garden Bar Golf Society

We meet once a month for a day's golf at high quality courses. Current members cover a wide range of abilities, with handicaps ranging from 6 to 28 and, although the golf is important, the social aspects of the day are equally significant.

For more information, call in to the Garden Bar at The Waterfront, Sovereign Harbour, or send us an e-mail gardenbar@hotmail.co.uk

Sovereign Harbour flickr Group

The Sovereign Harbour Eastbourne Group on flickr is an on-line public gallery to view and upload photos of Sovereign Harbour. Website: www.flickr.com/groups/sovereignharboueastbourne/



Yoga at the Yacht Club

Yoga Classes at the Yacht club
Every Monday morning 10 – 11am

Suitable both for beginners and experienced

Yoga can rebalance your whole body strengthen the flexibility of muscles and joints improve Heart and lung functions and decrease stress levels

****Non members welcome****

For details call Tricia on: 07914 669681
or
Email: eastbourneyoga@yahoo.com



Wing-Walk Donation to RNLI

Back in July, Harbour resident and SHRA committee member Frances Lawrence did a sponsored wing-walk flight for charity. The flight was booked through [The Wing Walk Company](#) at [Headcorn Aerodrome](#) in Kent, so, if you fancy doing it, you know where to go!



On Sunday 2nd October Frances was pleased to present Eastbourne RNLI with a cheque for £2000 which she had raised doing the wing-walk. The money will be used to purchase much needed equipment for the Eastbourne, Sovereign Harbour lifeboat station. Frances thanks all her sponsors for their donations.



Sovereign Harbour Photoclub UK

The Sovereign Harbour Photoclub UK meets on Tuesday evenings from 7pm over coffee, in the Sovereign Harbour Yacht Club. Prospective members of all abilities, from beginners to professionals are welcome.

The objective of the club is help our members take better photographs with camera or smart-phone and to increase members knowledge and ability through projects, exhibitions and competitions, supported by talks and demonstrations. Young photographers especially welcome.

If interested in taking part, please e-mail Bob Stanborough (club secretary) at: shpcuk@outlook.com with your name and a daytime telephone number.

Langney Sports Indoor Bowls Club

This modern members only facility has 6 full size indoor bowls rinks and is located near to the harbour directly behind the Eastbourne Borough football clubhouse in Priory Road, Eastbourne.

Both experienced and novice bowlers are welcome to come along by prior arrangement, to see what is on offer and to have a go before committing to any membership.

The bowls rinks are open from 9.30am right through to 10pm every day throughout the year, so this is a great way to get exercise and meet some new friends.

Annual membership is £90 per member, with members then paying just £2 per 2 hour session of play. Members of the bowls club are entitled to use the bars and clubrooms of the adjacent football club, with discounted bar prices.

Please do get in touch direct with me, David Hawkins, for further information via my business email of: sovtechnical@gmail.com

Review of Polling Places and Polling Districts

Eastbourne Borough Council have issued the following notice.

“In accordance with the Representation of the People Act 1983 (section18), as amended by the Electoral Administration Act 2006 (Section 16), notice is hereby given that Eastbourne Borough Council is carrying out a review of its polling districts, polling places and polling stations.

The Returning Officer has prepared a consultation document where they have made comments and recommendations of the suitability of polling stations within in each polling district.

Electors within the Eastbourne Borough may make a representation. The authority would welcome the views of residents, particularly residents with disabilities, on the proposals or any other related matter.”

One of the changes proposed in the consultation document concerns the North side of Sovereign Harbour, where it formalises the move of the polling station from the Yacht Club to the Community Centre - the South side polling station remains at The Haven School. See relevant extract from the consultation document below.

SVB	The Haven School, Atlantic Drive, Eastbourne, BN23 5SW	Sovereign	1,683	429	Located within the polling district. Easily accommodates the required single polling station. Reasonable disabled access. Suitable lighting inside and out. Parking is not great as the school will not allow voters to park within the school. Have not received any complaints about this venue.
SVC	Current Venue: Sovereign Harbour Community Centre, The Crumbles, BN23 6JH	Sovereign	2,132	777	The venue was moved to Sovereign Harbour Community Centre when it opened in 2019 in accordance with the 2018 Review. Located within the polling district. Easily accommodates the required single polling station. Good Disabled vehicle access via different access road. Good disabled access, suitable lighting inside and out and parking. There have been no complaints about this venue. Two large halls available.
	Previous Venue: Sovereign Harbour Yacht Club, 3 Harbour Quay, Eastbourne, BN23 5QF				

The full consultation document can be found on the following website:

<https://www.lewes-eastbourne.gov.uk/article/2322/Review-of-Polling-Districts-and-Polling-Places-in-the-Borough-of-Eastbourne>

Representations should be made in writing to:

Electoral Services
Eastbourne Borough Council
Town Hall
Grove Road
Eastbourne
BN21 4UG

Or email elections@lewes-eastbourne.gov.uk Please include ‘Polling Station Review’ in the subject line.

Information will be made available throughout the review for public inspection at the Council Offices, Town Hall, Grove Road, Eastbourne.

The final date for receipt of representations is 5pm 3rd November 2023.



Half Term Halloween Fun at The Waterfront

If you're looking for free, family-friendly fun this October half term, we have a week of Halloween themed fun planned at The Waterfront, Sovereign Harbour.

From Monday 23rd to Sunday 29th October, children can take part in a pumpkin hunt around the harbour. Find 11 spooky Pumpkin characters around the harbour and don't forget to look out for the hidden letters that make up a secret password! FREE sweets and glow-in-the-dark goodies for children 3-11yrs old who work out the two-word password and tell Planet Golf!

On Saturday 28th and Sunday 29th October, look out for Theodora Trinket the friendly witch; her delightful charm and stunning glittery costumes will dazzle everyone she casts her magical spells on.

And it's all treats and no tricks at our **Autumn Artisan Market, open both days on the weekend 28th and 29th October from 10am to 3pm.** Celebrating the best of local business, our markets are the perfect opportunity to indulge in delicious, locally made treats from small businesses around Eastbourne and explore an incredible variety of food, drink and other products.

For full details about our Halloween Antics and everything else on offer at The Waterfront visit www.eastbournewaterfront.co.uk or follow us on Facebook @TheWaterfrontEastbourne



Discounts for SHRA Members

The local companies listed below have kindly agreed to offer a discount to SHRA members on production of a SHRA Annual or Lifetime membership card. Please support these local businesses.

Discounts are offered at the discretion of the proprietors. A typical discount is a 10% reduction. Terms and conditions may apply (e.g. may apply only to food or eating in and/or only on certain days or a limited number of persons).



- **Active Days Mobility Services.** Repairs and maintenance of mobility devices. 01424 532620 www.activedaysmobility.co.uk
- **AP Exclusiv Events** organise tribute events, home and leisure events, wedding and Christmas fayres and conferences and offer a discount and no booking fee for members of SHRA purchasing tickets online for their events. For information visit their website at <https://www.apexclusiveevents.co.uk>
- **AP-it.** Computer health-checks, upgrades, data backup. Tel: 01323 887894 www.ap-it.co.uk
- **Boatshed Brighton** - 10% off brokerage through Boatshed, Sussex' most highly rated yacht brokers. 079200 22540 timkingston@boatshed.com <https://brighton.boatshed.com>
- **CoCo Hair** - Hair and beauty salon. The Waterfront, Sovereign Harbour. Also require proof of Harbour address. 01323 471147 www.cocohair.co.uk
- **Curry Leaf Restaurant.** On eating-in food costs. 8 Susans Road. Tel: 01323 727900 <https://www.just-eat.co.uk/restaurants-curry-leaf-old-town/menu>
- **Listening to You.** Discount on Counselling services. Strictest confidence. 07976 399 998 www.listening-to-you.co.uk
- **Osteopathy - Michael Woodleigh BSc Hons (Osteopathy),** offers this very specialist form of therapy, which is non-invasive and highly effective. Michael, who has been serving Sovereign Harbour Medical Centre since it opened, offers SHRA members a free initial consultation. This offer is limited to members of the SHRA and is subject to the first consultation with Michael only. For more details please contact Michael on 01323 767228 or via the website: www.eastbourneosteopath.co.uk
- **Pablo's Restaurant.** The Waterfront. On food costs only for no more than four persons Telephone: 01323 470400. www.pablos-eastbourne.co.uk
- **Planet Golf** - a 12-hole, space themed, glow in the dark mini golf course, located at 20, The Waterfront is pleased to offer SHRA members the discounted opportunity to play as many holes as you can in an hour between 11am-6pm midweek when open (Monday to Friday, not weekends nor bank holidays) for £5 on showing their SHRA membership card. [On Facebook...](#) [Planet Golf website....](#)
- **Simply Italian Restaurant.** The Waterfront. Discount on food costs only. 01323 470911 www.simplyitalian.co.uk
- **Sea Training Sussex (STS).** On-line, shore-based and on-water powerboat and sailing courses. Discount on some training courses. Telephone: 07713 639066 www.seatrainingssussex.co.uk

Annual Membership of the SHRA is open to all households in owned or rented residential property located within the Sovereign Harbour estate, and owners of such residential property.

[Join now online at: www.shra.co.uk/join](http://www.shra.co.uk/join)

Sovereign Harbour Yacht Club

It was another busy late summer for the Yacht Club. We were delighted to welcome Mary Grace, Georgie Sinclair, Rick Bonner, Back In The Room and The Princess and the Peas to entertain members at weekends in August and September.

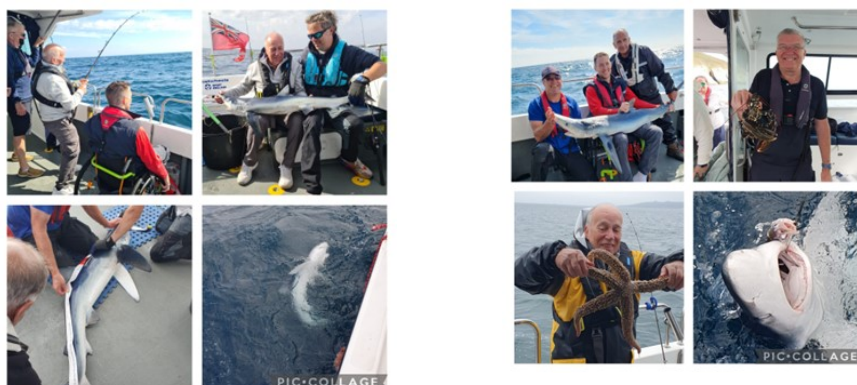
We were also very pleased to welcome back Wetwheels South East from Dover over the August Bank Holiday. You might remember we had a full programme back in July but sadly the bad weather meant that several charities were disappointed as their trip had to be cancelled. But thanks to Sovereign Harbour Rotary Club who kindly enabled the boat to return, the children and adults who had missed out were able to get out to Belle Tout Lighthouse and they all had a fantastic experience.

We have also held our annual Commodore's Sailpast. The boats amassed in North Harbour on a beautiful sunny, September afternoon. Our Vice Commodore Annie Brooks dipped the flag. (Thank you David Clare for the photo). This tradition goes back several centuries "where flag etiquette dictated that the ensign should be dipped by Club members to warships of all nations."



The day concluded with a fabulous evening, as always, from Dead Calm. Great musicianship with lashings of fun and humour.

Some of our fishing team were down in Falmouth Bay in mid September on the Wetwheels South-West (Falmouth) boat. Twenty boats entered this competition and on Day 1 our team finished 1st. Day 2 saw challenging seas and less fish biting. However the team added to their tally of blue shark catches. Day 3 was even worse with biblical weather which meant that the boats had to fish for different species up river such as ray and bull huss. The Wetwheels' skipper, David Rogers, was awarded a medal for the longest combined fish caught. Their wheelchair angler, Luke Loudon, caught the longest blue shark of their haul at 1.73m. The team finished 2nd overall and in spite of the poor weather, a good time was had by all. It was a CATCH, MEASURE, PHOTOGRAPH and RELEASE competition and so no fish were harmed during the event.



We have lots to look forward to. A great evening with the hugely talented Sam Hughes as Sir Elton John and Meatloaf, Play Your Cards Right, Trafalgar Night (another traditional yacht club event) a Halloween party and a Port Tasting Evening.

Ros Saunders

Communications Officer

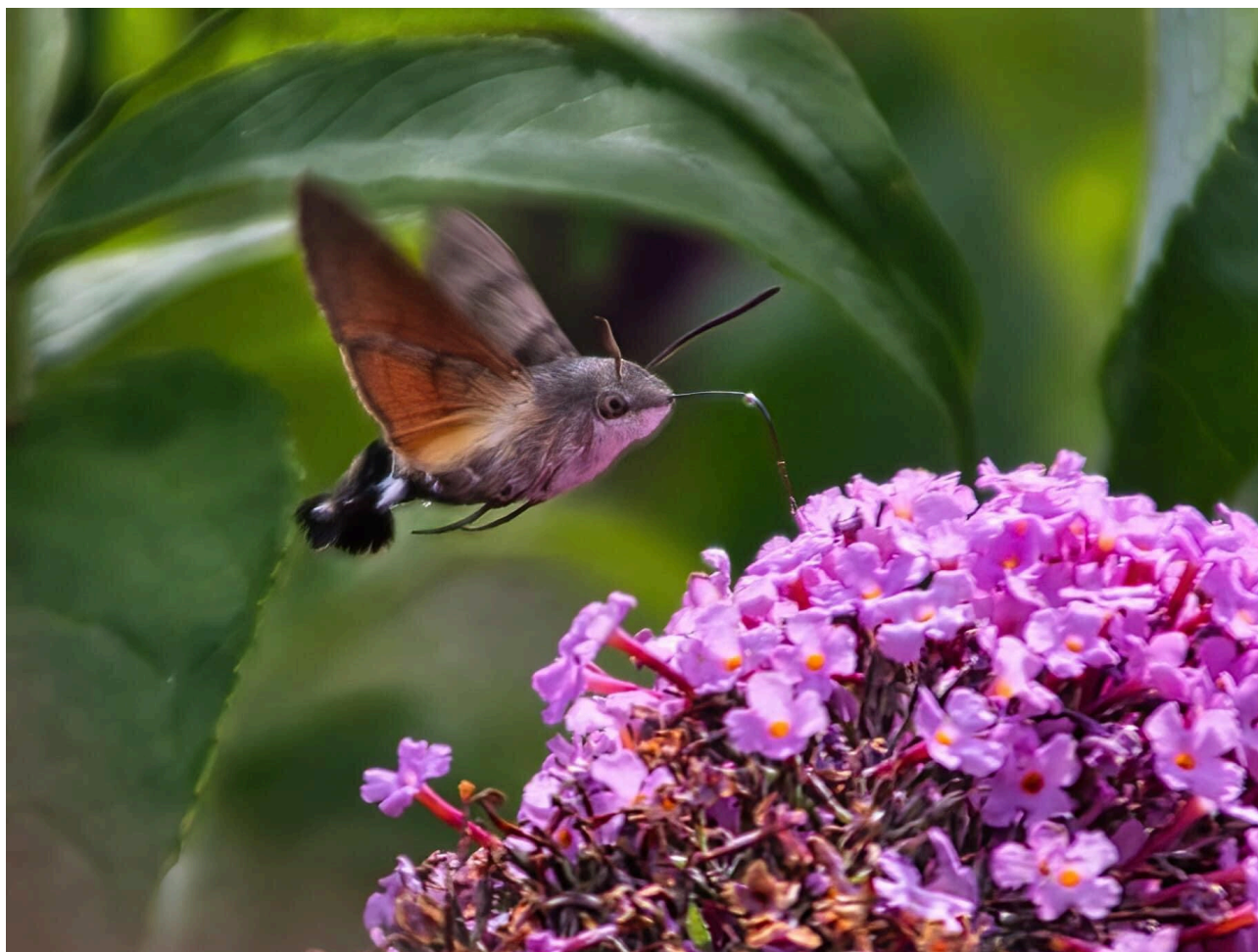
Sovereign Harbour Photo Club

Well it's certainly been a month of very mixed weather, but we still meet every Tuesday evening in the yacht club regardless. In fact if you are a Yacht Club member and regular visitor to Sovereign Harbour Yacht Club, you will hopefully have noticed the gallery of pictures up the stairway, all of which are by photo club members. We were recently asked by the commodore to take on this task and we were happy to oblige. The pictures will be rotated during the year with new ones, so keep your eyes open and that will keep on our toes.



We recently changed our format a little, in that we now have a half hour social (with drinks if you wish), from 7- 7.30pm and then commence from 7.30, with our weekly review of members pictures (on a given topic), with friendly critique, which we hope everyone finds constructive and we always have a tutorial on a photography related subject in order for members to continually expand their knowledge and ability. We enjoy a fun environment with few formalities, it just about enjoying photography, whatever equipment you choose to use.

Our monthly challenge is always something to look forward to, where members can take pictures of any topic and post them on our Facebook page, the one with the most 'likes', during the month is deemed our winner (in two categories ,Mobile Phone and Camera). Last month's winners are shown below. George Fisher's "*Humming Bird Moth*" (Camera)



Continued on page 17



And above, Izabela Rickets, "Harbour Scene" (Mobile phone).

We have recently been concentrating on tutorials related to use of Neutral Density filters, which are readily available for any camera and also for smart phones. If you'd like to find out more about this, or any other photography topic, we can accommodate you, with a wealth of knowledge from our more experienced member photographers, who love to share their knowledge. We hope to get out into eastbourne soon to do some street photography, but with the evenings drawing in, it will probably be combined with night photography. (Wow ! Multi-tasking). I didn't think men could do that

Part of our aim is also to teach members how to edit their photos, as all 'professional' photographers shoot in RAW format and then 'post edit', their pictures. I know there is an 'Old School', lobby, who believe editing is cheating and all pictures should be straight out of the camera. I can only say they are entitled to their opinions, but we have fun ensuring we are more than happy with our results.

I recently took pictures, which resulted in this photo (right). I'm happy with it, but I know it will be a "marmite moment" for some people.

If you are interested in expanding your photography, we would love to see you one Tuesday, or please e mail me at: shpcuk@outlook.com for more information. If you are already a Sovereign Harbour yacht club member you are free to join us at any time, but non-members can join us as a guest for a couple of visits to see if you like what we do, (but you would ultimately need to join the yacht club to continue).



Please don't forget to check out our Facebook page at : [Sovereign Harbour Photo Club UK](#).

Bob Stanborough
Secretary, Sovereign Harbour Photo Club UK

AP Exclusiv Events at Sovereign Harbour

We are delighted to advise some forthcoming events at Sovereign Harbour.



~~Festive Afternoon Tea — Sunday 26th November 2023. Canceled~~

~~Christmas Afternoon Tea in support of St Wilfrids Hospice at the Sovereign Harbour Community Centre with a tempting selection of sandwiches, savouries, cakes and scones, accompanied by a good pot of tea plus seasonal live entertainment. 3.00pm to 5.00pm, £25 pp.~~

For info please call 07780 475200 or email info@apexclusiveevents.co.uk

~~Christmas Party Night — Friday 15th December 2023. Canceled~~

~~The Sovereign Harbour Christmas Party in support of St Wilfrids Hospice at the Sovereign Harbour Community Centre. Starts at 6.30pm, with an “amazing grazing” 2 course Christmas Buffet like you have never seen, Licensed Bar, Live music, Carols, Disco, and Dancing until 11.30pm. Tables are for 10 guests, with Crackers and Party Novelties. Fill one up with your own party, or join a “sharing table”, and have a great time! £36 pp.~~

For info please call 07780 475200 or email info@apexclusiveevents.co.uk

PRIVATE PARTIES

If you would like to have a private party for a special occasion we would be delighted to help – for further details please call 07780 475200 or email info@apexclusiveevents.co.uk

SOVEREIGN HARBOUR WINE CLUB

With our extensive contacts with vineyards, merchants and importers, we would like to set up a Wine Club for any interested SHRA members. We are planning on holding bi-monthly meetings featuring talks by local Wine Experts, visits by and to local vineyards, Wine Tastings, and any other topics of interest. Regular updates, special offers and discounts for members, all for a very modest monthly subscription. Please contact us if you would like more details on 07780 475200 or email info@apexclusiveevents.co.uk



GETTING MARRIED?

On **Sunday 8th October** there is a **Wedding Showcase at Sovereign Harbour Yacht Club from 11am – 4pm**, with a selection of local quality wedding suppliers - also featuring a Horse and Carriage, so why not come and enjoy a ride. Free entry, all welcome.

DIARY DATE

On **Saturday and Sunday 6th/7th January 2024** AP Exclusiv Events are holding our **13th annual “Eastbourne Wedding Spectacular”** at the **Welcome Building Conference Centre**, the largest two-day Wedding Show in the South-East, regularly featuring over 100 suppliers and attracting over 4,000 visitors. **Open 10am – 4pm both days, Free Entry**, all welcome. For further details please call 07780 475200 or email info@apexclusiveevents.co.uk

WEDDING SHOWCASE

At The

Sovereign Harbour
Yacht Club



Sunday 8th October 2023

OPEN 11am to 4pm

FREE ENTRY

#apxevents

AP Exclusiv Events



EASTBOURNE WEDDING SPECTACULAR

At The
Welcome Building
Eastbourne

Sat/Sun 6th/7th
January 2024

New Features
Events Hall
Demonstrations

Open 10am - 4pm

FREE ENTRY

#EWS24



Sovereign Harbour Community Centre

Now OPEN!
Available for hire



Sovereign Harbour Community Centre is a purpose built facility, providing multiple rooms for hire for meetings, conferences, social events or weekly clubs.

Set near the Sovereign Harbour area of Eastbourne, Sovereign Harbour community Centre is near to retail outlets, free parking areas, main bus routes and accessible by road access. The community centre is open for one off and regular group bookings and is perfect for all occasions. Available for hire to clubs, groups, meetings, and events. The space can also be hired for birthday parties, baby showers, and other special events.

Our Main Hall is perfect for parties and large events, with access to outside area suitable for BBQ's or play.



As a medium sized hall, our Multi Functional Room is suitable for small parties, larger meetings, social club gatherings as well as classes.



Our Meeting Room is ideal for small meetings, conference breakout room or small club gatherings.



sport
EASTBOURNE



The Crumbles, Pevensey Bay Road, BN23 6JH
01323509859

sporteastbourne@waveleisure.co.uk
www.sporteastbourne.co.uk



Challenges



St Wilfrid's Hospice

Run, ride, walk, stroll, skydive... **you choose!**

BEACHY HEAD MARATHON WEEKEND

Saturday 21st and Sunday 22nd October 2023

There's something for every runner over the course of this weekend; one of the biggest off-road marathons in the UK, the new 52.6km Ultra event, a challenging half marathon and a scenic 10km loop. Something to aim for this autumn or next?

EASTBOURNE HALF MARATHON

Sunday 3rd March 2024

Now in its 19th year, the Eastbourne Half Marathon is an established part of the local running calendar. Ideal for a first half marathon challenge or perfect for searching for a personal best time; this is a half marathon suitable for all.

LONDON MARATHON

Sunday 21st April 2024

It's the ultimate marathon experience! Applications for our charity places are now closed, but if you were a lucky one who got a place in the ballot, we'd love you to run for us! If you choose to be part of Team Wilf, you'll receive dedicated fundraising support, a branded running vest and an on the day Cheer Squad.

ULTRA CHALLENGES 2023/24

Whether you are a walker and new to endurance events, or a marathon runner looking to up the distance; whatever your likely pace, experience level, or age, there are 14 fantastic events in the Ultra Challenge Series to choose from, each with its own character and each a real challenge. Whether it's setting out in stunning coastal scenery, along a historic towpath, or along trails in England's wonderful countryside – your challenge will test you on an unforgettable journey.

To book or register your interest in any of these events go to stwhospice.org/all-challenges



Charity Registration No: 283686

CONTACT THE TEAM ABOUT ANY EVENT OR CHALLENGE

Email fundraising@stwhospice.org or call 01323 434241



Registered with
FUNDRAISING
REGULATOR



To book or register your interest in any of these events go to stwhospice.org/all-challenges

HOSPICES TO HOLLAND

18th - 22nd September 2024

Five days, four countries. One epic ride! This bespoke cycle challenge will take us through an iconic English and European route all the way to Amsterdam and is perfect for cyclists of all abilities. Over 280 miles of fantastic cycling with breathtaking scenery and all to raise funds for hospice care.

Make this a journey to remember!

THRILLSEEKER CHALLENGES

Calling all daredevils, thrillseekers and adrenaline enthusiasts; put your nerves to the test to raise funds for hospice care.

Whether it's skydiving, bungee jumping, wing walking or abseiling, there's a thrilling challenge, with your name on it.


Whichever challenge you decide to take on, you are sure to have an adrenalin-filled experience which will help raise vital hospice funds and enable us to support more people living with a life-limiting illness.

What are you waiting for?

SET YOUR OWN CHALLENGE

If you have your own idea about a challenge you want to take on; whether it's one which is organised by a challenge company or one that is entirely your own, then we would love to hear about it. Get in touch to let us know and we'll welcome you to Team Wilf and give you all the support and encouragement you need to achieve your goal.

VISIT: stwhospice.org/all-challenges



CONTACT THE TEAM ABOUT ANY EVENT OR CHALLENGE

Email fundraising@stwhospice.org or call 01323 434241



St Wilfrid's Hospice