



Welcome to the December issue of *Waterlines*. We hope that you find items of interest. The SHRA committee meets monthly at the Yacht Club to discuss the concerns and issues raised by our members and we continue to contact and lobby other about those and other matters.

Your comments and suggestions are always welcome, as are articles for publication in future editions; anything that would be of interest to Sovereign Harbour residents. waterlines@shra.co.uk.

The SHRA committee members wish you all a Merry Christmas and all the best for the New Year, and we thank you for your support, interest and assistance during 2022.



Contents

Retail Park Drive Thru	2
Sussex Police Funding Survey	2
Growth Strategy for Eastbourne	3
SHRA Response to Aldi Proposal	4
Waste and Recycling Tips	5
Harbour WI	6
Sovereign Shines 2022	7
Xmas at The Waterfront	7
Sovereign Harbour Yacht Club	8
Cooking with Faz Razeen	9
Xmas Craft Fair at Beachy Head	10
Discounts for SHRA Members	11
Harbour Friends Social Group	12
Introducing Marina Turkish Restaurant	13
Sovereign Harbour Photo Club	14
Oliver's Postcards	15

Our thanks to the companies below for their generous sponsorship of Waterlines for 2022

**GINGER & SANDERS**
PROPERTY SALES & LETTINGS

**10 YEARS**
2012-2022

FIRST RESPONSE LEARNING
PROFESSIONAL - COST EFFECTIVE - QUALITY TRAINING
FIRST AID AT WORK EAST SUSSEX

T: 0800 999 0100 M: 07808 964796
E: enquiries@firstresponse.co.uk

**Victoria Healthcare**
Management

Private Medical Insurance Brokers
Honest and tailored advice

• 01323 301 270 • info@victoriahm.co.uk
www.victoriahm.co.uk

**AP-it**
Your local friendly I.T. Service

Computer and Laptop repairs for Residential and Business clients...

01323 887894 - 07900 473134 - www.ap-it.co.uk

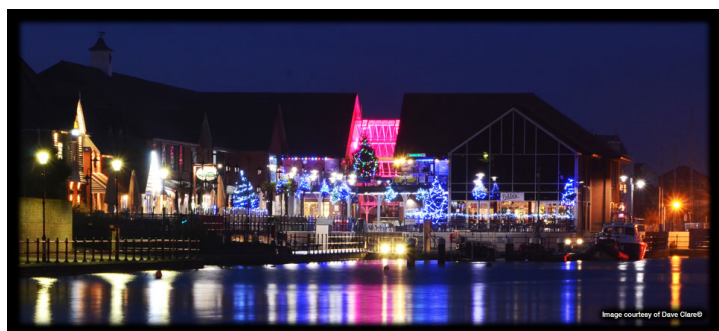
**SEA TRAINING SUSSEX**
PRACTICAL BOAT TRAINING
Shorebased + Online

**RYA Training Centre**

W: seatrainingsussex.co.uk T: 01323 387141

**Sanders**
PROPERTY MANAGEMENT

**17 YEARS**
2005-2022

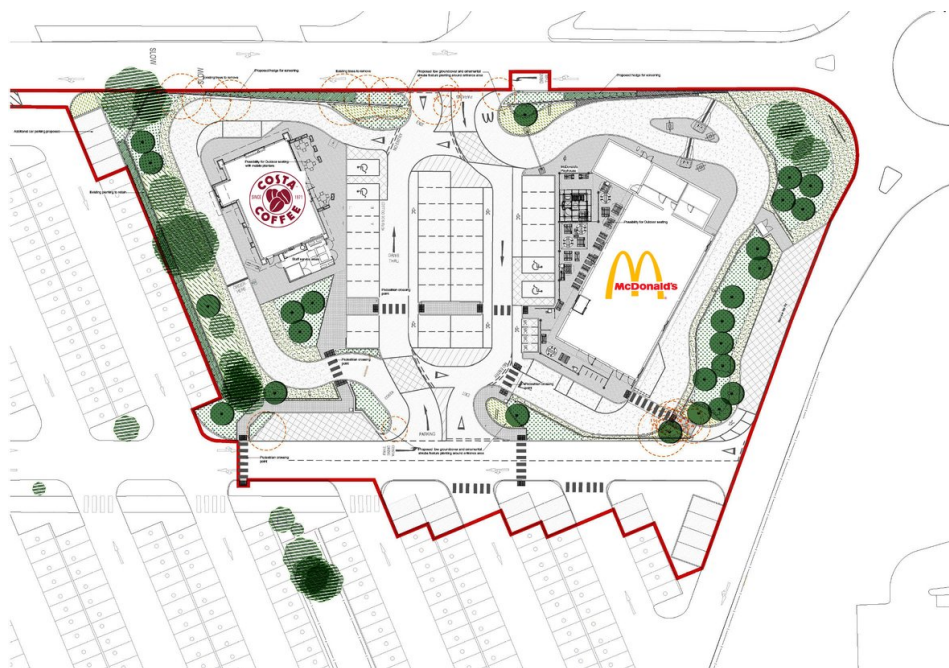


Retail Park Drive-thrus Proposed

The Prudential Assurance Company Ltd. have submitted to EBC a planning application for Unit 9 of the retail park involving the demolition of the two existing buildings (Defiant Sports/Blockbuster Video and the old Frankie & Benny's), and the erection of two new buildings each with a separate drive-thru facility.

The tenants will be Costa Coffee and McDonald's and the buildings and drive-thru facilities will encompass all of the car park directly in front of the buildings to be demolished.

[The application number is 220877.](#) Additional applications cover lit totem signs and access, etc.. **Comments need to be submitted to EBC by 24 December.**



Sussex Police Funding Survey



Sussex
Police & Crime
Commissioner

Sussex Police & Crime Commissioner Katy Bourne is asking residents to share their thoughts on policing priorities and the precept element of the 2023/24 Sussex Police budget in this survey.

The PCC said: "After five years of restoring neighbourhood policing, I know people don't want to see visible policing diluted. With the public's support there will be no cuts to PCSOs and we remain on track to have 3,089 police officers in Sussex by April next year." **The consultation runs until midnight on Tuesday 10th January.**

You can also find more information and the link to the survey on the PCC's website. <https://www.sussex-pcc.gov.uk/about/news/have-your-say-on-police-funding-precept-survey-202324/>

Harbour Friends



Harbour Friends meet every Wednesday evening at 7.30 at the Yacht Club.

For the uninitiated, Harbour Friends is a social group of Harbour Residents, of all ages, both singles and couples, with the purpose of building friendships and generally enjoying life on our lovely harbour.

Events are open to members only so why not join. At only £17.50 per year this is a bargain.

For further information please visit the Harbour Friends website at: www.harbourfriends.co.uk

Rotary Club of Sovereign Harbour



The Rotary Club of Sovereign Harbour meets every Tuesday at 7:00pm for a buffet dinner in Seasons at the Sovereign Harbour Waterfront. Visitors and any prospective new members are very welcome to join us.

For more information please visit the [Rotary Club of Sovereign Harbour website](#).

Please note that when reading 'on-line' in your web browser, [links](#) from this PDF version of *Waterlines* may not always open in a new window or tab. Hovering over the link and pressing down on your mouse wheel may work. Or, from a followed link press the "back" button of your browser to return to *Waterlines*; or download the PDF to your device.

Please consider printing copies of *Waterlines* to hand to neighbours who may not use the Internet.

Growth Strategy for Eastbourne

Eastbourne Borough Council have launched a consultation to seek the views of local residents, businesses and other stakeholders on the 'Growth Strategy' for Eastbourne.

This strategy is well worth a look as it sets out the level of housing and employment growth that could be accommodated in Eastbourne up to 2039 including 28 key development sites where future development might take place.

Some interesting sites are described, including the Debenhams and TJ Hughes sites in town, the ESK site and, worryingly, Fisherman's Green! Sovereign Harbour Sites 6 and 7A are included, as is a large site proposed for housing fronting the length of Pevensey Bay Road opposite Site 7 (it is important to note that this is about possible future use of this site - there are no actual planning applications and further investigations of the site would be required as to its suitability).



The council are asking for your views on the 'Growth Strategy' so that these can be considered before they determine how and where growth will be proposed in the draft Local Plan, a document which will eventually also cover issues, such as addressing climate change, encouraging regeneration, and protecting the natural, built and historic environments. This will be subject to a future public consultation.

This is your chance to have your say at an early but important stage. **Comments need to be received by Friday 20th January.** Have a look at the proposed Strategy and if anything jars with you, or there is something you particularly like, tell your council (e.g. are you happy with greenfield sites being proposed for housing when brownfield sites may be available?).

You can read the Strategy on-line or download it from the cloud as a PDF from this web page: https://planningpolicyconsult.lewes-eastbourne.gov.uk/ELP_GS The web page also has details of how to comment.

Sovereign Harbour Berth Holders Association

The Sovereign Harbour Berth Holders Association was formed in 1999 and is RYA affiliated. The Association benefits the berth holders as well as the harbour management.

Membership offers discounts from local trades people, free RNLI safety courses, workshops and other courses. Visit their website for more information: www.shbha.co.uk

Sovereign Harbour Short Mat Bowls Club

As you would expect the Club has not been able to meet since the first Covid lockdown and any hope of resuming shortly has been dashed by the Community Centre hall being required by the NHS as a vaccination station.

We are, however, hoping to resume our Wednesday afternoon meetings as soon as the hall becomes available which may not be until January when we would welcome new members.

No previous experience is required as tuition will be given nor is any specialist equipment or dress necessary save for a pair of flat soled shoes.

If you are interested in joining us please contact the Secretary Anne Newson either by e-mail at newson17@live.co.uk or by phone on 01323 472259



SHRA's Response to Aldi Proposal

SHRA is opposed to the current planning application that proposes access to Aldi from Pacific Drive, on the grounds of traffic congestion at the only vehicular entrance and exit for the 2000 plus homes in North Harbour, safety, noise and light pollution in the immediate vicinity and also the parking arrangements for cars and delivery lorries. In addition, EBC's current Employment Land Local Plan had ruled out retail use as being inappropriate for the site.

4.48 In order to support the creation of a Sustainable Centre at Sovereign Harbour, any remaining space on Sites 6 and 7a that is not used to deliver the 23,125 sqm (GEA) of B1 floorspace could be developed for other employment generating uses that are compatible with the residential area, with the exception of A1 (Retail), A3 (Restaurants & Cafes) and A5 (Hot Foot Takeaway) uses. It is not considered that these Class A uses would be appropriate outside the defined Sovereign Harbour District Centre.

SHRA, along with many residents and the local councillors and our MP had lobbied the developers during the developers initial consultation exercise to raise our concerns about the impact of the plans on our residential road and our residential area. All our concerns fell on deaf ears and were ignored.

In order to formulate our best response, SHRA formed a sub-committee comprising of four committee members and seven concerned residents with differing areas of expertise in opposing similar applications. Meetings and subsequent email correspondence have proved to be informative and we've all learnt from each other.

Our initial task was to encourage concerned residents to submit their comment on the plans to EBC. Our next job was to formulate SHRA's submission on the planning application. A number of us conducted traffic counts at various times on various days at both the Aldi store in Hampden Park and at the Pacific Drive roundabouts. This helped us produce a comprehensive 16-page Traffic and Safety Report and also a more technical Policy and Impacts Report. Both have been submitted as part of SHRA's objection and both are available to view on the Site 7 page of our website (www.shra.co.uk/devsite7.html)

At the time of writing, over 300 people have made an online submission, of which 95% are in opposition to the plan in its current form. The next stage is to prepare for the planning hearing which will probably take place at the Town Hall in January or February and to ensure that a good representation is made on the day.

SHRA will also be writing to EBC to oppose the Site 7A care home and retirement apartments planning applications. Although we are more relaxed about these developments, the plans show that the car parking space provided for each development is inadequate when you take into consideration staff, visitors, careers and other welfare services that will likely make daily visits. This could lead to parking on Pacific Drive and its side roads. We will say that the developer should provide more parking spaces for each development.

Sovereign Harbour Art Group

The Sovereign Harbour Art Group classes resumed on Thursday mornings at Christ The King Church Hall, Princes Road (Langley Roundabout) between 10:00am - 12:30pm.

Learn to paint with acrylics, oils, watercolours and pastels with an experienced art tutor in a friendly, relaxed and enjoyable environment. Fees are £10 per person for each 2.5 hour session, which covers hall hire and tuition. Annual membership fee is £6.

For more information please phone Phone Angela on 07914-884378 or visit the Art Group's web page at: www.shra.co.uk/artgroup/artgroup

Eastbourne Age Concern Walking for Wellness



Every Thursday morning starting at 10.30am Walk length: 75 Minutes. Meet outside Seasons restaurant at 10.30am for a vigorous circular walk of up to 3 miles around the harbour, marina and shoreline. It does you good! There is some uneven ground. Ends back at cafe for refreshments. [Visit website for further details.](#)

The Garden Bar Sunday Football Team

The team plays its home games at Hampden Park, and have been champions of the Lewes and District Premiership. They have been runners-up in several knock-out cup tournaments.

For more information, call in to the Garden Bar at The Waterfront, Sovereign Harbour, or email gardenbar@hotmail.co.uk

Waste and Recycling Tips

Paper - Wet paper, tissue paper, kitchen paper, face masks, glittery or plastic wrapping paper should all be put into your household rubbish bin.

Blister/ pill packets - Blister Packs can be recycled at Superdrug pharmacies or at TerraCycle drop-off points. Because these are made from two materials, they are not accepted in the kerb-side recycling.

Sanitary waste including nappies - Period hygiene products, nappies, and bathroom waste must be disposed of in your household waste bin. It's recommended to wrap the used nappies in a hygienic covering before tossing them in the refuse bin. www.nlwa.gov.uk/campaigns-and-projects/bin-your-nappy

Batteries - Batteries are the major cause of fires within the waste industry and should NOT be put into your waste or recycling. All shops that sell batteries should by law provide a battery recycling collection point, please take you used batteries with you when buying new ones.

Old Razors - These are made of multiple materials and are not accepted in the kerb side recycling. Gillette are working with TerraCycle to provide recycling for any brand of razors, for your envelope visit the Gillette web site Recycle Razor Blades | Gillette UK

Toothbrushes and toothpaste tubes Like all dual material items, they are not collected in your kerb-side collection but TerraCycle is running three different dental care recycling schemes, these can be found on line. Colgate® and hello® Oral Care Free Recycling Programmes accept all makes of oral care products. www.terracycle.com/en-GB/brigades/colgate-uk

Foil-lined Pouches - Crisp packets, baby food and pet food pouches are not accepted in your kerb-side collection but can be returned to some supermarkets, Morrisons, Tesco and Sainsburys have all set up in-store recycling schemes for their customers.

Textiles - Clothing, sheets, blankets, shoes, curtains, and soft furnishings are not collected in the kerb-side collection, these items can be donated at charity shops, Household waste and Recycling centres, [Freegle](#), [Freecycle](#). Some clothing outlets have return bins in store, e.g. Marks and Spencer, Primark.

WEEE, Waste Electric and Electronic Equipment. These items can be returned to a shop if you are buying a replacement, the shop keeper will take them for recycling, this is called the "In-store take-back". Retailers must provide this service to everyone for free, regardless of whether they've bought anything from your store.

By the way, if a manufacturer offers a web address for recycling details, do visit it as they record hits on it and with many hits they may get the message that we want to recycle and that they need to do more towards making their packaging recyclable.

Maritime Volunteer Service

The Maritime Volunteer Service (MVS) is a charity organisation which aims to promote seamanship and maritime engineering for the young and old alike through local units around the country.



Training nights are held every Tuesday evening at 19:30 in the new MVS unit within the Boat Shed. New members are always welcome, but give us a call first so we can organise for someone to greet you.

For more information, [visit the MVS website](#) or [E-mail MVS](#) or Tel: 01892-853500.

The Haven Players

The Amateur drama group based at the Memorial Hall, Dittons Road, Stone Cross. Members include Sovereign Harbour residents.

Visit their Website for details: www.havenplayers.co.uk

Ward Councillor Surgeries

The Sovereign Ward councillors hold a surgery on the third Saturday of the month between 10.30am to 12.30pm in the Simply Italian restaurant on The Waterfront

Harbour WI - Meeting Report

The 14th November was the Harbour WI's AGM. After welcoming members and guests President Jacqui Frost introduced WI Advisers Shirley Kirby and Marion Piggot who were there to oversee the election process and running of the Annual Meeting.

Treasurer Marion Charlton gave the Treasurer's Annual report and proposed Jacqui Healy to take her place as she has moved house and is stepping down. This was followed by Daphne Chamberlain presenting the Committee's Annual Report and lastly the President Jacqui Frost with the President's Annual Report. Jacqui said she had very much enjoyed being president and would be prepared to continue if nobody else wanted to do the job! The Committee were then elected and voted on with a show of hands and Jacqui Frost was voted as President for a second year with a paper vote.

Jacqui told members that we had sadly lost two members; Norah Owen after a short illness and Rosalind Bainbridge who had celebrated her 100th Birthday last year.

Before tea members had a half hour of 'Speed Chatting'. This had been tried before and enjoyed. Four members from each table of eight moved on to the next table to talk to different people! On the ring of a bell they moved on again. Very noisy! Tea was lovely with delicious cakes supplied by the catering committee.

Dorothy Proietti, joint Chairman of the ESFWI and also delegate for the charity [The Associated Country Women of the World](#) (ACWW) came to give a talk on her charity.

ACWW supports rural women all over the world to raise the standard of health, improve lives of families and encourage educational opportunities. Every WI worldwide collects money and disused items to fund their projects. Dorothy was given bags and cases of goods collected by the Harbour WI.



The Craft Club will meet at Sandie Goman's house on the 12th November and the 4th Tuesday Club plan to meet for coffee in Four Seasons on the 29th November.

There will be no Lunch Club as there is a Christmas Lunch on November 30th at the Langham Hotel.

The next meeting is on the 12th December at 2pm in the Sovereign Suite of the Sovereign Harbour Yacht Club. It will be the Harbour WI Christmas Party.

Information on the Harbour WI can be found on the SHRA website. www.shra.co.uk/wi

Sovereign Harbour Yacht Club



We welcome new members at any time. You don't need to own a boat. Lots of social functions and many other varied activities throughout the year.

We have great food and discounted drinks to our members and are the only club in the harbour selling Harveys beer!

Our opening hours are:

Tues-Thurs	17.00-23.00
Friday-Saturday	12.00-23.00
Sunday	12.00-18.00

Call in and speak to Sarah to view the club, or contact the membership secretary, Linda Hayler.

Tel: 01323 470888

membership@shyc.co.uk

Website: www.shyc.co.uk

The Eastbourne Historic Vehicle Club

The Eastbourne Historic Vehicle Club Ltd. dates from 1975 and resulted from the activities of a small group of transport enthusiasts.



It is a member-involved club, run for their enjoyment and benefit. Its aims are simple and straightforward and its activities diverse within the preservation field.

The Club meets on the fourth Thursday of each Month at Langney Sports Centre, Priory Lane. Details on our website: www.ehvc.biz

Sovereign Shines 2022



It's less than a week to go until we celebrate a spectacular Sovereign Shines in aid of two amazing local charities - and there is still time to help us light up the harbour with your house this Christmas!

Whether you're shopping for decorations this weekend or looking to make something personal and home-crafted – the mission is to get as many Sovereign Harbour boats and houses involved as possible.

With new categories and fantastic prizes to be won including luxurious Christmas hampers and dining experiences - please join us in lighting up the harbour and help support the RNLI Eastbourne and Children with Cancer Fund – Polegate.

Urgent! Lights will need to be up and registered by Friday 9th December to ensure your display is included in the judging taking place between 9th - 11th December.

To enter simply register your location online by clicking the following link: <https://www.eastbournewaterfront.co.uk/sovereign-shines-application-form/> then decorate your house or boat and send a photo of your masterpiece to sovereignshines@eastbournewaterfront.co.uk along with your harbour location and address.

Sovereign Shines Festive Fun - On Friday 9th December between 4pm to 8pm, expect a magical atmosphere with live performances from The Eastbourne Community Choir, a Christmas market selling a range of gifts and treats from local businesses (open from 2pm), a real reindeer family, Santa and his elf, face-painting and American police cars!

Plus, take part in a **festive elf hunt** around the harbour. Find our 10 cheeky elves and take a picture of the hidden Santa to show at Planet Golf and get into the festive spirit with free chocolate coins for children to enjoy – sponsored by the Sovereign Harbour Berth Holders Association.

The Christmas market will also continue into Saturday 10th December (10am to 3pm) in conjunction with the **charity Santa Stroll around the Harbour (11am)**, organised by The Rotary Club of Sovereign Harbour and sponsored by Premier Sovereign Harbour. Details and sign-up at: <https://santastroll.org.uk/>



To stay up to date with all the latest news and events at The Waterfront visit www.eastbournewaterfront.co.uk and follow their Facebook and Instagram channels.

Sovereign Harbour Bridge Club

We hold our duplicate bridge sessions every Tuesday and Thursday, in the first floor bar of the Sovereign Harbour Yacht Club.



Please arrive by 13:15, for a prompt 13:30 start. Hosts are provided, so a partner is not necessary.

We extend a warm welcome to both experienced and novice players, we are a very social club with members often partaking in activities together including having a drink in the bar when our bridge finishes at 5pm.

Please visit our web site for more information: www.bridgewebs.com/sovereignharbour/

Residents of Sovereign Harbour Facebook Group

An active group on Facebook with news, photos, information, events and other posts and discussions on local issues from Sovereign Harbour residents.

www.facebook.com/groups/129998750673307/



Sovereign Harbour Community Facebook Group

An active group on Facebook with news, events and commercial information from Sovereign Harbour residents.

www.facebook.com/SovereignHarbourCommunity



Sovereign Harbour Yacht Club

Sovereign Harbour Yacht Club wish all Harbour residents



The Yacht Club continues to be very busy with regular Thursday quiz nights, Saturday night music quizzes, race nights, port tasting hosted by Harveys of Lewes and Sunday sailing races when the weather permits (some of them are very hardy and race whatever the weather).

We have recently held the final two formal nights at the club - Trafalgar Night Dinner, always on the nearest weekend to 21st October and Laying Up supper.

We have had several live music nights where we have welcomed Dead Calm and Sam Hughes as Sir Elton John. Sam is the youngest Sir Elton John Tribute act in the UK and is amazing.



We have recently held the final two formal nights at



We had a full house that night and we are delighted that both acts will be returning next year along with other cover bands and an Elvis tribute act.

We also have solo singers on some Sunday afternoons during the year - Rick Bonner, Owen Donovan and Maybe Diana have been enjoyed this year.

Remember you don't have to be a boat owner to be a member of the yacht club and you can be entertained nearly every weekend of the year for £84 a year.

We are now gearing ourselves up for Christmas with a race night, a children's Christmas party with a Punch and Judy entertainer who will do magic and balloon modelling and a visit from Santa and a fabulous Christmas lunch on the Sunday before Christmas followed by our annual giant Christmas raffle.

Once again we wish you a very Happy Christmas and New Year.

Ros Saunders

Communications Secretary



Pevensey Bay Sailing Club

Friendly, family orientated dinghy sailing and windsurf club, 10 minutes walk along the beach from the harbour. General sailing, training at all levels and regular club racing and social events.



We welcome beginners and experienced sailors alike and we sail at the weekends and on Tuesday & Thursday evenings in the summer. Our clubhouse offers hot food and a bar at the weekends, and a sun terrace with stunning views over the bay to Bexhill and Hastings. Do come and have a look round the club at any time or contact the membership secretary by email: membership@pbsc.eu Website: www.pbsc.org.uk

The Garden Bar Golf Society

We meet once a month for a day's golf at high quality courses. Current members cover a wide range of abilities, with handicaps ranging from 6 to 28 and, although the golf is important, the social aspects of the day are equally significant.

For more information, call in to the Garden Bar at The Waterfront, Sovereign Harbour, or send us an e-mail gardenbar@hotmail.co.uk

Sovereign Harbour flickr Group

The Sovereign Harbour Eastbourne Group on flickr is an on-line public gallery to view and upload photos of Sovereign Harbour. Website: www.flickr.com/groups/sovereignharboueastbourne/



Cooking with Faz Razeen

Lamb Steaks with Red Wine Sauce

With this recipe using simple ingredients, minimal cooking time and a flavour that will make you love it, lamb steaks have that rustic yet sophisticated appeal that is impossible to resist.

This recipe would be an ideal alternative to the traditional Christmas lunch or dinner, you do not have to spend hours of cooking a joint or a roast turkey.

INGREDIENTS

½ Small onion sliced finely
2 -3 Garlic cloves minced
Salt for seasoning
1 tsp Peppercorns crushed
2 Lamb steaks - medium size
2 tbsps Butter – if required add little more
4 tsps. Balsamic vinegar
1 glass good quality Red wine
150ml (¼ pint) Lamb stock or alternatively use beef stock cube
2-3 tsps. Redcurrant jelly [optional]



INSTRUCTIONS

Use a small/medium pan for 2 steaks or alternatively a larger frying pan for 4 steaks. Heat the pan with 1 tbsp butter and lightly fry sliced onions and chopped garlic for approx. 2 minutes and set aside.

Season the steaks with salt and crushed peppercorns. Ensure to trim the fat prior to cooking. Add the steaks to the pan and fry on medium to high heat for 3-4 minutes on each side or until done to your liking.

Remove the steaks and keep warm, wrap the cooked steaks in a foil to rest. While steaks rest, add the remaining butter to the pan, using the same pan with the juice, add the onions and garlic mix, then fry in the pan until starting to brown. Add the balsamic vinegar and simmer for just over a minute.

Add the red wine and simmer until reduces slightly, then add the lamb stock and simmer for 2-3 minutes until everything comes together.

If you like a bit of sweetness to your sauce, add red currant jelly and stir gently to make sure it dissolves thoroughly.

Return the steaks to the pan with the sauce and mix steaks well with the sauce, turning both sides of the steaks to absorb the sauce.

Serve steaks with sauce immediately with your choice of vegetables, green beans, sauteed potatoes and tomatoes work well with this dish.

Sovereign Harbour Photoclub UK

The Sovereign Harbour Photoclub UK meets on Tuesday evenings from 7pm over coffee, in the Sovereign Harbour Yacht Club. Prospective members of all abilities, from beginners to professionals are welcome.

The objective of the club is help our members take better photographs with camera or smart-phone and to increase members knowledge and ability through projects, exhibitions and competitions, supported by talks and demonstrations. Young photographers especially welcome.

If interested in taking part, please e-mail Bob Stanborough (club secretary) at: shpcuk@outlook.com with your name and a daytime telephone number.

Royal Sovereign Bowls Club

Situated at the bowling greens in Princes Park, there is seating for non-bowlers and spectators around both of the greens.



Open daily from the end of April until end of September each year.

New members, whether new to the game or who have played previously, are welcome. Please visit our website for more details royalsovereignbowls.wordpress.com

Christmas Craft Fair at Beachy Head

A Christmas Craft Fair is taking place at The Beachy Head Story this weekend for people to pick up festive crafts, perfect presents and enjoy live music and carol singing.

The fair is on Saturday and Sunday 10 - 11 December, from 10am to 4pm on both days.

Each day will have a different selection of sellers. On Saturday stall holders will be selling woodcrafts, dog accessories, Christmas wreaths and shadowboxes, handmade fibre art pieces, pebble art, decorations and baubles, and artwork and crafts.

At 1pm on Saturday, Eastbourne Community Choir will sing Christmas carols.

On Sunday there will be stalls offering stained glass pieces, wool accessories and gifts, artwork and cards, handmade gifts, embroidered gifts, and handmade resin gifts.

Festive folk music will be performed throughout the day by Liz Pearson.

The Beachy Head Story gift shop will also be open with its wide range of local gifts including jams and chutneys from Eastbourne's Wild Preserves, award-winning, eco-friendly playsets from Sussex based PlayPress Toys and cards and prints by Seaford based designer and illustrator Onneke.

The shop also stocks a range of gifts inspired by the exhibition and Beachy Head. There is an exclusive exhibition selection of gemstones and fossils and all gifts are ethically and environmentally sourced



Harbour Women's Institute (WI)

The Harbour branch of the W.I. meets on the second Monday of the month at 2:00pm in Sovereign Harbour Yacht Club. It also has a Craft Club with separate meetings.



If you are interested in taking part, please contact Frances Harrap on: 01323-472649.

Website: www.shra.co.uk/wi/

Harbour Exercise Classes

Mari-Anne is fully insured with a MSc in exercise physiology, specialising in clinical exercise and exercising with cancer.

Currently, classes are held virtually on Fridays: 9.15-10.10am Pilates.

Contact: Mari-Anne Elder
Tel: 07748 678030. Email: mariandy@btinternet.com

Sovereign Harbour Social Club

The Sovereign Harbour Social Club meets every Wednesday from 10:00am to 11:30am in the Simply Italian annex at The Waterfront for coffee. There are occasional outings for lunch, theatre, places of interest. All are welcome. For further details please contact Betty Saunders on 01323-479514. Website: www.shra.co.uk/shsc

Discounts for SHRA Members

The local companies listed below have kindly agreed to offer a discount to SHRA members on production of a SHRA Annual or Lifetime membership card. We hope this encourages you to support these local businesses.

Discounts are offered at the discretion of the proprietors. A typical discount is a 10% reduction. Terms and conditions may apply (e.g. may apply only to food or eating in and/or only on certain days or a limited number of persons). Please let us know of any difficulties.



- **Active Days Mobility Services.** Repairs and maintenance of mobility devices. 01424 532620 www.activedaysmobility.co.uk
- **AP-it.** Computer health-checks, upgrades, data backup. Tel: 01323 887894 www.ap-it.co.uk
- **Boatshed Brighton** - 10% off brokerage through Boatshed, Sussex' most highly rated yacht brokers. 079200 22540 timkingston@boatshed.com <https://brighton.boatshed.com>
- **CoCo Hair** - Hair and beauty salon. The Waterfront, Sovereign Harbour. Also require proof of Harbour address. 01323 471147 www.cocohair.co.uk
- **Curry Leaf Restaurant.** On eating-in food costs. 8 Susans Road. Tel: 01323 727900 www.just-eat.co.uk/restaurants-curryleaf-bn21/
- **Listening to You.** Discount on Counselling services. Strictest confidence. 07976 399 998 www.listening-to-you.co.uk
- **Pablo's Restaurant.** The Waterfront. On food costs only. No more than four persons Telephone: 01323 470400. www.pablos-eastbourne.co.uk
- **Planet Golf** - a 12-hole, space themed, glow in the dark mini golf course, located at 20, The Waterfront is pleased to offer SHRA members the discounted opportunity to play as many holes as you can in an hour between 11am-6pm midweek (Monday to Friday, not weekends nor bank holidays) for £5 on showing their SHRA membership card. [On Facebook...](#) [Planet Golf website....](#)
- **Revival Car Care.** Discount on car valeting services. Tel: 07507 899191 www.facebook.com/revivalcarcare/
- **Simply Italian Restaurant.** The Waterfront. Discount on food costs only. 01323 470911 www.simplyitalian.co.uk
- **Sea Training Sussex (STS).** On-line, shore-based and on-water powerboat and sailing courses. Discount on some training courses. Telephone: 07713 639066 www.seatrainingssussex.co.uk

Annual Membership of the SHRA is open to all households in owned or rented residential property located within the Sovereign Harbour estate, and owners of such residential property.

www.shra.co.uk/join

Harbour Friends Social Group



Hi to all Waterlines readers

Firstly, I would just like to take this opportunity to wish everyone a Very Happy Christmas and a Prosperous New Year.

Yes, the Christmas season is fast approaching and hopefully this year will be the first for some time, that we can class as normal.

Since my last update, HF members have enjoyed the following special events: Group Tour of the Hippodrome Theatre, Autumn Disco Dance, Video Racing Night and Talks by Mr Neil Kirby the owner of Langham Hotel, Eastbourne and also by the RNLI.

Events lined up for the rest of this year and into 2023 are as follows: Christmas themed QUINGO, Coach trip to see Bedgebury Christmas Lights, Christmas Lunch at The Marine Pub, Christmas Party Night at The Hydro Hotel, further talks and finally the groups 18th Birthday Celebration evening with People Racing in February.



The group appears to be getting very popular of late, with a significant number of new members signing up over the last few months. This is of course great news, but the downside is that we are finding that a lot of our special events have now become over-subscribed.

The groups committee have discussed this situation and to avoid disappointing existing members in respect of events, it has been decided to temporarily suspend new memberships, until any existing members decide to cancel and thereby free up places.

If you are a harbour resident and have been considering joining the group, I would suggest that you make contact with our membership secretary a.s.a.p. as she will now be compiling a waiting list.



For further details please visit our website at: www.harbourfriend.co.uk from where you can also make contact with our membership secretary Sandie Goman, by using the contact form

We also have a Facebook page that is regularly updated with everything going on at Harbour Friends. The page is public, so can be viewed by anyone and no Facebook account is needed. The page can be found at the following weblink: www.facebook.com/harbourfriends

That is about it for now and I do hope you all have a lovely Christmas & New Year.

Dave Hawkins

Publicity Officer for Harbour Friends Social Group

Introducing...

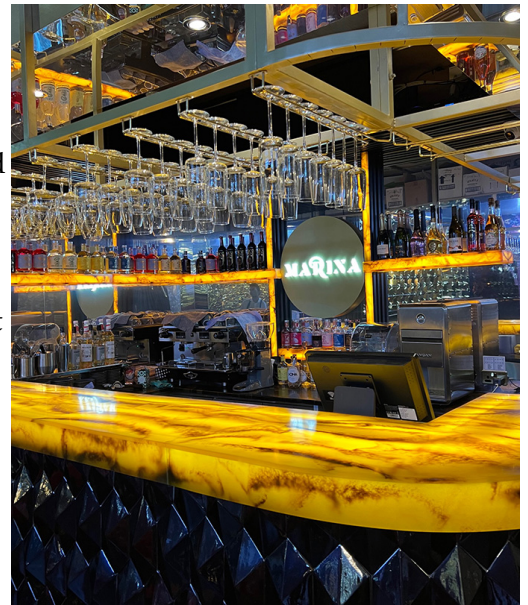
We opened on 17 November 2022 and we're open Tuesday to Sunday 12-10pm.

Why is our restaurant different?

- Delicious food - Our Turkish chefs have years of experience in kitchens around the world bringing authentic Turkish cuisine to guests. Their beautifully crafted dishes will leave you in awe. From our lovingly grilled and succulent meats to our freshly concocted mezés and salads - everything is cooked and prepared to absolute perfection.

- Drink - as one of East Sussex's first dry bar, we've set the standards exceedingly high. At Marina, we make some of the most extravagant and unique alcohol-free cocktails and drinks in the country. We take inspiration from all over the world and source quality ingredients, to create glamorous concoctions for everyone to enjoy. We know that alcohol-free won't be for everyone, but we really believe in this concept, and in fact, authentic Turkish cuisine has historically been enjoyed without alcohol. The tones, texture and flavours in our drink really bring out the flavour from our dishes. If I were to describe our bar, I'd say it's "all the fun, without the fuzz!"

- Decor - often we fall in love with our eyes and that's why at Marina you'll discover we've created the perfect marriage between beautifully presented food and stunning decor to deliver a visually striking experience. When you step into Marina, be prepared to immerse yourself in our stylish furniture and features, dynamic lighting and music that sets the mood for an unforgettable time with us. We've brought the swanky and striking lounges and eateries you'd find in Central London, to Eastbourne!



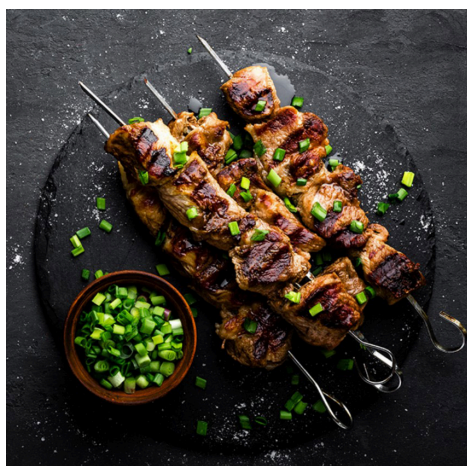
Do we have any specials?

Our dry bar in itself is unique. All our mangal creations have been a real hit. Mangal is the Anatolian term for an open charcoal fire used for cooking and around which family and friends gather to eat, drink and socialise. The mangal is the heartbeat of our kitchen - it's where we prepare and cook our meat, fish and veg over the charcoal heat.

We look forward to welcoming you at Marina

12 The Waterfront, Eastbourne, BN23 5UZ Tel: 01323 470009.

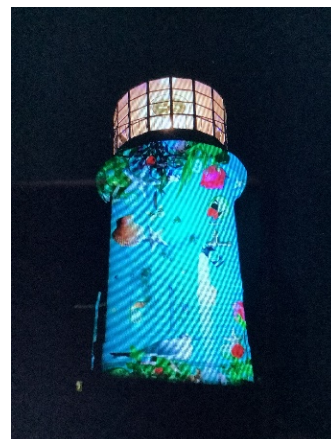
E-mail: hello@marinarestaurantlounge.co.uk website: www.marinarestaurantlounge.co.uk



Sovereign Harbour Photo Club

Sovereign Harbour Photo Club has continued to thrive, meeting in the Chartroom every Tuesday at 7pm. We are a mixed bunch, some using smartphones and some DSLRs or other cameras, but we are united by our love of photography. We are a dedicated group - 14 of us turned up on the night England were playing Wales!

On Tuesday evenings we share our photos on the topic of the week and discuss all sorts of things related to photography. The 'challenges' in November have covered the topics of 'leaves', 'night lights', and 'opposites', challenging the skills and ingenuity of the members. A selection of our photos are below.



In our monthly competition through our Facebook site, the winners with the most 'likes' were:



Interested in photography yourself? Why not try us out on a Tuesday evening? Grab a drink from the bar and join us at 7pm. Over Christmas and New Year we will not be gathering on Dec 20th, 27th, and Jan 3rd.

For more information email me, George Fisher (acting secretary), at: revgeorgefisher@gmail.com, or message our Facebook site, or just turn up.



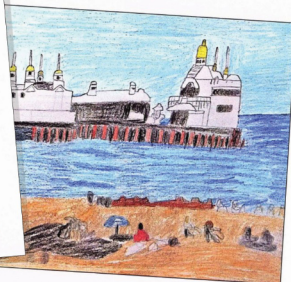
Havono NN749 arriving at Sovereign Harbour with sea



RNLI 16-23 Eastbourne Lifeboat at Sovereign Harbour.



Manx Belle Charter Boat.



Eastbourne Pier.

Oliver's Postcards

A new set of eight professionally printed postcards for a £10 donation to Eastbourne RNLI

The colourful images have been drawn by talented, 13 year old Oliver from Eastbourne, who is autistic. His first set of cards raised over £1,200 for the RNLI. Email Anna to order & donate: blandanna62@yahoo.com



Wetwheels Solent chalet marine catamaran at Beachy Head.



Southdown bus PUF647 Guy Arab IV 5



Sea Leopard charters at sea off Brighton.



RNLI 13-13 Swanage Lifeboat at Old Harry Rocks.

custard
DESIGN MARKETING PRINT

Printed and supplied by Custard and Bournefree

Bournefree
your local magazine