



Welcome to the October issue of *Waterlines*. We hope that you find items of interest. The SHRA committee meets monthly at the Sovereign Harbour Yacht Club to discuss the concerns and issues raised by our members and we continue to contact and lobby various organisations and people about those concerns and other matters.

Your comments and suggestions are always welcome, as are articles for publication in future editions; anything that would be of interest to Sovereign Harbour residents. waterlines@shra.co.uk.

Although the local clubs listed within are beginning to open up, with the community centre still remaining unavailable, please check dates, venues and times with the organisers. If you manage or attend one of the clubs please let us know of any corrections or updates needed to your listing as we are keen to support these local initiatives.

Contents

Retail Park	2
Cycle Path on New Flood Defences?	2
Meetings with Councillors and Premier	3
Mayor's Charity Seafront Walk 2022	3
SHRA Response to Site 7 Consultation	4
SHRA Members' Views on Site 7	5
Anti-social Driving PSPO in Force	6
Eastbourne Local Lottery	6
Harbour WI	7
What's On at The Waterfront	8
Maritime Volunteer Service Operation	9
Cooking with Faz Razeen	10
Sovereign Harbour Yacht Club Events	11
Discounts for SHRA Members	12
Harbour Friends Social Group	13
The Travel Concept Holiday Showcase	14
Harbour Dolphins	15
St Richards Church Events	15
Sovereign Harbour Seals Update	16
Sovereign Harbour Photo Club	17
The Tyler Sisters at The Lamb Theatre	18
Stop Littering Our Beaches!	19
Oliver's New Postcards	20

Our thanks to the companies below for their generous sponsorship of Waterlines for 2022

**GINGER & SANDERS**
PROPERTY SALES & LETTINGS

**10 YEARS**
2012-2022

FIRST RESPONSE LEARNING
PROFESSIONAL - COST EFFECTIVE - QUALITY TRAINING
FIRST AID AT WORK EAST SUSSEX

T: 0800 999 0100 M: 07808 964796
E: enquiries@firstresponse.co.uk

**Victoria Healthcare**
Management

Private Medical Insurance Brokers
Honest and tailored advice

• 01323 301 270 • info@victoriahm.co.uk
www.victoriahm.co.uk

**AP-it**
Your local friendly I.T. Service

Computer and Laptop repairs for Residential and Business clients...

**TRUST WITH CONFIDENCE**
FURNITURE APPROVED

**SEA TRAINING SUSSEX**

PRACTICAL BOAT TRAINING
Shorebased + Online

**RYA Training Centre**

**Sanders**
PROPERTY MANAGEMENT

**17 YEARS**
2005-2022

Retail Park

SHRA has written to the M&G, the retail park landlords, asking for repairs to the surface and markings of the car park. We also asked for an update on their plans for upgrading the retail units. M&G told us they were arranging a site visit to assess the situation. We requested a brief meeting with them during their visit but they did not respond to that offer. In case they were unaware, we also informed them of the Aldi proposal, which may have put the cat amongst the pigeons! We will contact M&G again if we don't hear back from them soon.



We also contacted our ward councillors to ask why the decision document granting planning consent for the B&M store and garden centre on the old cinema site has not yet been published despite the press reporting back in July that EBC had given the go ahead. In response we have been told that the application was approved on 25 July but final consent is subject to a S106 agreement for a Local Employment and Training Agreement, which is still being drafted, and other unresolved issues. The decision notice will be published when all the parties are signed up to the S106 agreement. We hope this is not EBC causing unnecessary difficulties and delay in favour of The Beacon site.

Cycle Path with New Sea Defences?

At this year's SHRA AGM, one of our members asked a question as to whether there were any plans to incorporate a dedicated cycle path along the new sea defences when they are built. As many of you will know, Bespoke, the local cycle group has been campaigning for a separate cycle path along the prom for years. The present arrangement just brings pedestrians into conflict with cyclists and means cycling on a very busy road for much of the route. The answers given at the AGM by Andy Walker from the Environment Agency (EA) and Caroline Ansell MP were somewhat evasive.

Previously, Andy Walker had told us that a dedicated cycle path would not be funded by the EA and Eastbourne Borough Council would have to find funding for it from elsewhere.

Over the summer, your chair approached Cycling UK about funding for such a path. Cycling UK confirmed that Eastbourne was definitely on their radar as somewhere where cycling provision was poor and would like to help. They pointed to projects like the new Southsea defences funded by Portsmouth council and a new cycle path between Weston and Clevedon in Somerset which had been funded by local authorities and many different public sources.

It would appear that National Highways has a designated budget for "Health and Well-being" which could be used for funding cycling infrastructure. Cycling UK then wrote to EA to ask about the possibilities. The response suggested that the EA are open to the idea of a cycle path, so with help from Cycling UK, Bespoke is aiming to set up a meeting for all parties – EA, EBC and Cycling UK. We will keep you posted on any further developments.

Harbour Friends



Harbour Friends meet every Wednesday evening at 7.30 at the Yacht Club.

For the uninitiated, Harbour Friends is a social group of Harbour Residents, of all ages, both singles and couples, with the purpose of building friendships and generally enjoying life on our lovely harbour.

Events are open to members only so why not join. At only £17.50 per year this is a bargain.

For further information please visit the Harbour Friends website at: www.harbourfriends.co.uk

Rotary Club of Sovereign Harbour



The Rotary Club of Sovereign Harbour meets every Tuesday at 7:00pm for a buffet dinner in Seasons at the Sovereign Harbour Waterfront. Visitors and any prospective new members are very welcome to join us.

For more information please visit the Rotary Club of Sovereign Harbour website.

Please note that when reading 'on-line' in your web browser, [links](#) from this PDF version of *Waterlines* may not always open in a new window or tab. Hovering over the link and pressing down on your mouse wheel may work. Or, from a followed link press the "back" button of your browser to return to *Waterlines*; or download the PDF to your device.

Please consider printing copies of *Waterlines* to hand to neighbours who may not use the Internet.

Meetings with Councillors and Premier

1. We met the three ward councillors last month and raised the following issues with them. Nothing was fully resolved from the agenda but the councillors are aware of the issues and, like us, will be chasing up the relevant parties where appropriate.

- Macauley Place Open Space – bogged down in legal dispute.
- The kids play-area on Vancouver Road is due to be cleaned
- EBC tree planting - we were advised to contact EBC's Simon Hurt
- Live-aboards – Premiers responsibility. EBC not concerned.
- Port Moresby – Developers have not met their requirements (the developers may have gone out of business).

2. We met with Premier Marinas earlier this week to raise the following issues. We will report back on the outcomes later.

- Repairs to the Outer Harbour revetment
- EA Sea Defences Project
- Live Aboards - are numbers policed?
- Seal information boards - permissions and help with costs?

Mayor's Charity Seafront Walk 2022



The Mayor of Eastbourne has set a new date for his 4.6 mile seafront walk in aid of two local charities.

The Mayor's Charity Seafront Walk 2022 will take place on Sunday, October 9, tracing a scenic route from Fisherman's Green to Holywell and back again.

The original date was postponed until after the Queen's funeral.

The Mayor, Councillor Pat Rodohan, welcomes walkers of all ages to join him along the mostly flat route to help fundraise for his two chosen charities.

All money raised will be split between Eastbourne Mencap, which supports local people with learning disabilities, and Eastbourne Foodbank, a charity that provides food and other essential items to residents in crisis.

Walkers must register in advance to participate. The cost is £10 for adults or £5 for children and all walkers will receive a water bottle, t-shirt and certificate.

Book online now at eventbrite.co.uk/e/mayors-charity-sponsored-seafront-walk-2022-tickets-410493245347

Walkers are asked to assemble at Fisherman's Green at 12.30pm for a 1pm start.

For more information contact the Mayor's office by email at mayoroffice@lewes-eastbourne.gov.uk or by phone on 01323 415020.

Sovereign Harbour Berth Holders Association

The Sovereign Harbour Berth Holders Association was formed in 1999 and is RYA affiliated. The Association benefits the berth holders as well as the harbour management.

Membership offers discounts from local trades people, free RNLI safety courses, workshops and other courses. Visit their website for more information: www.shbha.co.uk

Sovereign Harbour Short Mat Bowls Club

As you would expect the Club has not been able to meet since the first Covid lockdown and any hope of resuming shortly has been dashed by the Community Centre hall being required by the NHS as a vaccination station.

We are, however, hoping to resume our Wednesday afternoon meetings as soon as the hall becomes available which may not be until January when we would welcome new members.

No previous experience is required as tuition will be given nor is any specialist equipment or dress necessary save for a pair of flat soled shoes.

If you are interested in joining us please contact the Secretary Anne Newson either by e-mail at newson17@live.co.uk or by phone on 01323 472259



SHRA's Response to the Site 7A Developers Consultation

SHRA

Sovereign Harbour Residents Association



By email to: feedback@consultation-online.co.uk

16 September 2022

Dear Sir or Madam,

Proposed Development of Site 7A Sovereign Harbour, Eastbourne

The Sovereign Harbour Residents Association (SHRA) represents the collective view of over 2000 Sovereign Harbour residents who are members of the Association.

Having circulated the proposals set out by Aldi, McCarthy Stone and LNT Care, we invited our membership to email us with their opinions of the proposal. We have received over 50 individual responses, of which only two supported the proposals. We feel confident that our members comments, will be similarly reflected in most of the responses you receive from the local residents.

Like almost all of the residents who have contacted us, and all the other residents we have spoken to about the proposals, we share the view that the planned access, the increase of traffic along Pacific Drive, the resulting pressure on local infrastructure and local services, as well as the environmental damage and loss of a peaceful ambience, would severely impact the safety, health and well-being of North Harbour residents.

Therefore, the SHRA is opposing the development proposal in its current layout.

We have been informed that there will be three separate planning consent applications, but we have not yet seen any of the actual site or building plans that would form the basis of the applications. It is our sincere hope that the developers take full account of the comments from residents opposing the development, make changes to their initial proposal, and share the new proposals with the local community before applying for consent.

Yours sincerely

Susan Kerrison

Susan Kerrison

Chair

Sovereign Harbour Residents Association

www.shra.co.uk

Email: info@shra.co.uk

The response above was also copied to the ward councillors. What happens next will depend on the developer's reaction to the comments they receive during the current consultation (a selection of comments from SHRA members is shown on the next page). We shall keep residents updated as matters unfold via our usual communication channels and via the dedicated Site7A webpage on the SHRA website. <https://www.shra.co.uk/devsite7.html>

Site 7 - Members' Views

We received over 60 submission from SHRA members about the proposed development of Site 7A. The overwhelming number were either against the proposal and/or had serious concerns about its impact on our residential areas. Only two were in favour. Here is a random selection...

- I think that it is a great idea. Every success to the development.
- On looking at the plans both the retirement homes and the care home developments will have insufficient parking spaces for both residents and visitors, leaving cars to park anywhere which will subsequently cause friction among existing residents and the visitors. Additionally the playground noise may also disturb retirement home residents causing complaints about noise from the playground.
- I also feel it's an over-development of the site given the number of existing care and retirement homes already within the Eastbourne boundary. A more appropriate use would be for affordable homes.
- The addition of an Aldi store would give Harbour and Langney residents more shopping options and if the remainder of the site was given over to affordable housing would possibly ease congestion worries.
- Please take these concerns seriously - our residents rely on this road being safe too. I think the care home and retirement living units are a very reasonable idea. I will reserve my final opinion on the Aldi Store after I visit the one in Hamden Park and see the size.
- My initial feeling is that all three will create more traffic but the Home and retirement units would be residential however the Aldi store will not be suitable because of the constant excess of traffic in and out at all times! It is bad enough at times trying to cross Pacific Drive without enticing further traffic. .
- Thank you for the information on the site 7 proposals. I would like to object to an Aldi being built on the site for all the reasons you have stated. My opinion is that a retail outlet does not enhance this site. I have no objection to the care home and residential flats.
- I have no problem with the care-home or retirement apartments but the siting of Aldi using the existing road infrastructure is very concerning. There will be increased traffic for residents both entering and leaving the Harbour. I have no issue with Aldi at all, but this is NOT the best site for a new store!
- A care home would be the best fit for the land next to the medical centre as it is a residential area. Aldi seems a very odd use of the land and not at all in keeping with the area.
- Has a study been done on the busy times at Aldi & whether they coincide with the busy times for current harbour exits? It is not unusual to queue from opposite Henley Park to enter the roundabout..

Sovereign Harbour Art Group

The Sovereign Harbour Art Group classes resumed on Thursday mornings at Christ The King Church Hall, Princes Road (Langley Roundabout) between 10:00am - 12:30pm.

Learn to paint with acrylics, oils, watercolours and pastels with an experienced art tutor in a friendly, relaxed and enjoyable environment. Fees are £10 per person for each 2.5 hour session, which covers hall hire and tuition. Annual membership fee is £6.

For more information please phone Phone Angela on 07914-884378 or visit the Art Group's web page at: www.shra.co.uk/artgroup/artgroup

Eastbourne Age Concern Walking for Wellness



Every Thursday morning starting at 10.30am Walk length: 75 Minutes. Meet outside Seasons restaurant at 10.30am for a vigorous circular walk of up to 3 miles around the harbour, marina and shoreline. It does you good! There is some uneven ground. Ends back at cafe for refreshments. [Visit website for further details.](#)

The Garden Bar Sunday Football Team

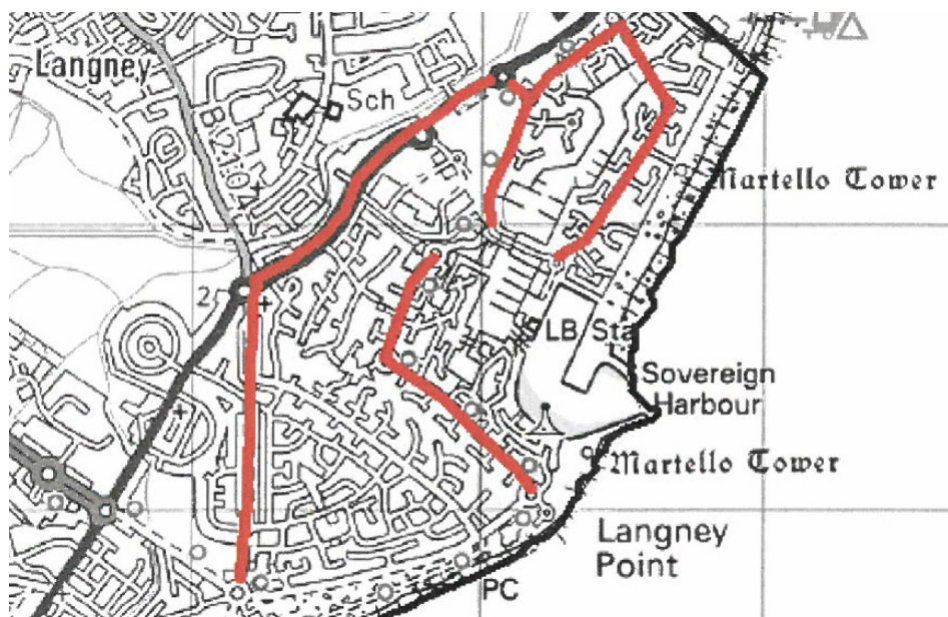
The team plays its home games at Hampden Park, and have been champions of the Lewes and District Premiership. They have been runners-up in several knock-out cup tournaments.

For more information, call in to the Garden Bar at The Waterfront, Sovereign Harbour, or email gardenbar@hotmail.co.uk

Local Anti-social Driving PSPO in Force

Following a consultation, new powers to tackle anti-social driving are now in force on some local roads. A new Public Space Protection Order (PSPO), made under the Policing Act of 2014, sets out a list of prohibited activities that include the revving of engines, rapid acceleration, racing, excessive noise from vehicles and off-road activity on public land. In our locality, Princes Road, Atlantic Drive, Pacific Drive, Harbour Quay and stretches of Pevensey Bay Road are covered by the new PSPO.

A person found in breach of the order can be issued with a Fixed Penalty Notice, and persistent offenders can be prosecuted and be liable on summary conviction to a fine of up to £1000. Further details and maps can be seen in the EBC document linked to from [SHRA's home page](http://www.shra.co.uk) www.shra.co.uk



Eastbourne Local Lottery

Keep it local! Eastbourne Local Lottery is a weekly lottery that raises money for good causes in Eastbourne. All good causes supported by the lottery will benefit Eastbourne and its residents. Play the lottery, support Eastbourne - it's that simple!



Tickets for the lottery cost just £1 a week. Each ticket has a 1 in 50 chance to win a prize each week, with a top prize of £25,000! That's a better chance of winning than the National Lottery or the Health Lottery.

Each ticket has six numbers and each number is between 0 and 9. There will be a draw every Saturday night when a six digit winning combination will be picked. Prizes will be given to players with tickets that match the first or last 2 to 6 numbers from the winning combination. Match all six and you win the jackpot!

Are you a good cause? Looking for a way to raise funds online? Find out how Eastbourne Local Lottery is raising money for good causes in your local community and could do the same for you!

Visit the website at: <https://www.eastbournelocallottery.co.uk>

Maritime Volunteer Service

The Maritime Volunteer Service (MVS) is a charity organisation which aims to promote seamanship and maritime engineering for the young and old alike through local units around the country.



Training nights are held every Tuesday evening at 19:30 in the new MVS unit within the Boat Shed. New members are always welcome, but give us a call first so we can organise for someone to greet you.

For more information, [visit the MVS website](http://www.mvs.org.uk) or [E-mail MVS](mailto:info@mvs.org.uk) or Tel: 01892-853500.

The Haven Players

The Amateur drama group based at the Memorial Hall, Dittons Road, Stone Cross. Members include Sovereign Harbour residents.

Visit their Website for details: www.havenplayers.co.uk

Residents of Sovereign Harbour Facebook Group

An active group on Facebook with news, photos, information, events and other posts and discussions on local issues from Sovereign Harbour residents. www.facebook.com/groups/129998750673307/



Sovereign Harbour Community Facebook Group

An active group on Facebook with news, events and commercial information from Sovereign Harbour residents. www.facebook.com/SovereignHarbourCommunity



Harbour WI - Meeting Report

As After welcoming 50 members and 11 visitors to the Harbour WI's September meeting, President Jacquie Frost read a tribute to our late Queen written by The National Federation Chairman Ann Jones, followed by a two-minute silence.

The Speaker Pete Allen was introduced by Jackie Stevens to give a talk called 'Watching the Detectives'. He had illustrations of the many crime programmes on our televisions, past and present. He pointed out how we are all obsessed with murder and how it is solved! It all started with Scotland Yard case files - with a bit of artistic license - such as Fabian of Scotland Yard and Dixon of Dock Green - [this ran for 21 years.] Pete went on to list hundreds of different ways they have depicted crime on our screens since. Many were on for years. Taggart is currently the longest runner at 27 years; closely followed by The Bill and Midsummer Murders. Some have been based on novels including 'Morse' [Colin Dexter] and 'Poirot' [Agatha Christie]. Others have been written by film producers such as the Kennedy-Martin brothers who produced Z Cars, the Bill and Sweeney. Pete felt that the future for crime television is going to be real life cases. "If we keep watching them, they'll keep making them!"



After tea, member Barbara Archer recalled her meeting with our late Queen when she was still Princess Elizabeth. Barbara was a 'Flower Girl' at the Maundy Thursday distribution of 'Maundy Alms'. Barbara lived in London at the time and her job was to hold the flowers under Princess Elizabeth's nose so that she couldn't smell the unwashed pensioners! She still has the Maundy Money in a little bag that she was given on the day.

Member Hiliary Hooper then recalled her meeting with the late Queen when she was working in Jakarta and was invited to the British Embassy to a reception for the Queen. Other members had also brought mementos, photographs and invitations to Receptions and Garden Parties which were displayed on a table with a picture of the late Queen.



The Craft Club met at Sandie Goman's house on the 13th September to start making a children's quilt to raise money for charity and the 4th Tuesday Club will meet in Four Seasons on the 27th September. Other future events include in a Christmas Lunch on November 30th at the Langham Hotel.

The next meeting is on the 10th October at 2pm in the Sovereign Suite of the Sovereign Harbour Yacht Club. It is the Harbour WI's 15th Birthday. Information on the Harbour WI can be found on the SHRA website www.shra.co.uk/wi

Sovereign Harbour Yacht Club



We welcome new members at any time. You don't need to own a boat. Lots of social functions and many other varied activities throughout the year.

We have great food and discounted drinks to our members and are the only club in the harbour selling Harveys beer!

Our opening hours are:

Tues-Thurs	17.00-23.00
Friday-Saturday	12.00-23.00
Sunday	12.00-18.00

Call in and speak to Sarah to view the club, or contact the membership secretary, Linda Hayler.

Tel: 01323 470888

membership@shyc.co.uk

Website: www.shyc.co.uk

The Eastbourne Historic Vehicle Club

The Eastbourne Historic Vehicle Club Ltd. dates from 1975 and resulted from the activities of a small group of transport enthusiasts.



It is a member-involved club, run for their enjoyment and benefit. Its aims are simple and straightforward and its activities diverse within the preservation field.

The Club meets on the fourth Thursday of each Month at Langney Sports Centre, Priory Lane. Details on our website: www.ehvc.biz

What's On at The Waterfront 2022



For full details visit www.eastbournewaterfront.co.uk

Halloween Antics and Autumn Pop-Up Market

Expect friendly spooks and a variety of entertainment for a family day out at the Waterfront during the **Autumn Half Term from Monday 24th to Sunday 30th October.**

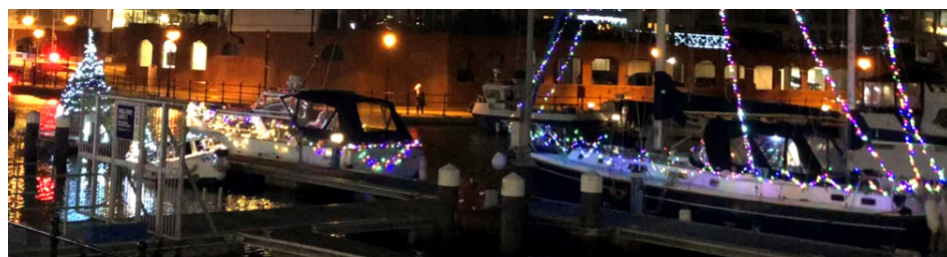
Plus, on the weekend 29th and 30th October, we have an incredible line up of local businesses in attendance for our quarterly **Pop-Up Artisan Food Market.** Try something new or purchase a familiar favourite as we showcase an amazing choice of food and drink items – locally sourced, produced and sold.



Sovereign Shines Festive Fun

To help boost community spirit and raise much needed funds for two amazing local charities, The Waterfront will celebrate this year's Sovereign Shines with an array of onshore entertainment.

In collaboration with the Sovereign Harbour Berth Holders Association and The Rotary Club, the event will include activities **across Friday 9th to Sunday 10th December**, including a live reindeer family, a Christmas Market and more to be announced!



And to continue the festive fun from Sovereign Shines, join a community **Santa Stroll around Sovereign Harbour on Saturday 10th December**, organised by The Rotary Club with all registration fees donated to and split evenly between the two chosen local charities.



To stay up to date with all the latest news and events at The Waterfront visit www.eastbournewaterfront.co.uk and follow their Facebook and Instagram channels.

Sovereign Harbour Bridge Club

We hold our duplicate bridge sessions every Tuesday and Thursday, in the first floor bar of the Sovereign Harbour Yacht Club.



Please arrive by 13:15, for a prompt 13:30 start. Hosts are provided, so a partner is not necessary.

We extend a warm welcome to both experienced and novice players, we are a very social club with members often partaking in activities together including having a drink in the bar when our bridge finishes at 5pm.

Please visit our web site for more information:

www.bridgewebs.com/sovereignharbour/

Save the DGH

Working since 2006 to fight the down-grading of core services at Eastbourne District General Hospital.



Core services include:

- Consultant delivered obstetrics;
 - Acute medical admissions 24/7;
 - Urgent surgical admission 24/7;
 - Accident and emergency 24/7;
 - Acute psychiatric service 24/7;
 - Paediatric ambulatory service
- And, all in-house services essential for the function of the core services.

Web site: www.savethedgh.org.uk

Maritime Volunteer Service Operation

For the third year running the East Sussex unit of the Maritime Volunteer Service has carried out an operation to transport tons of plastic rubbish from inaccessible rocks below Beachy Head to Sovereign Harbour for recycling and disposal ashore.

A total of 140 large bags of plastic has now been moved by the MVS from this one small area of coastline over the last three years.

The plastic had been washed up by the sea over the last 40 or more years and built up in layers, despoiling this beautiful stretch of coastline and putting wildlife at risk.

This operation was in support of a project by environmental group Beachy Head and Seven Sisters Extreme Plastic Objects Removal to clear plastic from underneath the cliffs between Eastbourne and Seaford



Pevensey Bay Sailing Club



Friendly, family orientated dinghy sailing and windsurf club, 10 minutes walk along the beach from the harbour. General sailing, training at all levels and regular club racing and social events.

We welcome beginners and experienced sailors alike and we sail at the weekends and on Tuesday & Thursday evenings in the summer. Our clubhouse offers hot food and a bar at the weekends, and a sun terrace with stunning views over the bay to Bexhill and Hastings. Do come and have a look round the club at any time or contact the membership secretary by email: membership@pbsc.eu Website: www.pbsc.org.uk

The Garden Bar Golf Society

We meet once a month for a day's golf at high quality courses. Current members cover a wide range of abilities, with handicaps ranging from 6 to 28 and, although the golf is important, the social aspects of the day are equally significant.

For more information, call in to the Garden Bar at The Waterfront, Sovereign Harbour, or send us an e-mail gardenbar@hotmail.co.uk

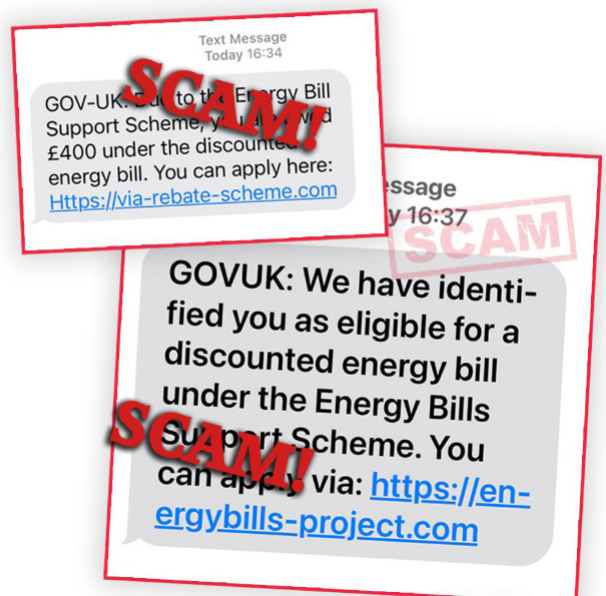
SCAM WARNING



SCAM TEXTS: Energy Bills Support Scheme

Action Fraud has received 139 crime reports relating to fake text messages purporting to be from the UK government. The texts state that the recipient is "owed" or "eligible" for an energy bill discount as part of the Energy Bill Support Scheme. The links in the emails lead to genuine-looking websites that are designed to steal your personal and financial information.

- **Energy Bill Discount** : £400 off energy bills for households in Great Britain from this October 2022. You do not need to apply for the scheme and you will not be asked for your bank details.
- Spotted a suspicious text message? Forward it to **7726** (it's free of charge)



Cooking with Faz Razeen

Pan Fried Cod with Lemon and Butter

This is a delicious, very easy and economical dish. It is very quick and simple to prepare. It doesn't get any easier. Cod has a mild flavour and firm texture which is perfect when cooked with touch of garlic, lemon juice and butter. It will remind you of something that you'd order in a restaurant.

Normally parsley is used in this recipe, I have decided to replace it with basil leaves. The flavour of basil is a balance between sweet and savoury, with hints of mint, anise and pepper.

You can always substitute this recipe with fillet of sea bass, salmon or sea bream.

INGREDIENTS

2 Cod steaks or fillets.

4 tablespoons butter,
divided

2-3 garlic cloves finely
chopped

¼ teaspoon paprika –
Optional

Handful of fresh chopped
basil and a twig of basil to
garnish

2 lemons (1 lemon for juice + 1 lemon to cook with slices)

Salt and black pepper

METHOD

Heat a frying pan over a medium high heat. Melt slowly approx. 2 tablespoons butter.

Season fish with finely chopped garlic, paprika and a large pinch of salt and black pepper.

Add the fish to the pan and fry for 2-3 minutes and then turn the fish over to cook the other side by adding the remaining butter, chopped basil and sliced lemon and fry the fish for another 2-3 minutes.

To finish squeeze lemon juice over the fish. Garnish with fresh chopped basil and lemon slices and enjoy.

This dish can be served with any vegetables or salad to suit your preference.



Sovereign Harbour Photoclub UK

The Sovereign Harbour Photoclub UK meets on Tuesday evenings from 7pm over coffee, in the Sovereign Harbour Yacht Club. Prospective members of all abilities, from beginners to professionals are welcome.

The objective of the club is help our members take better photographs with camera or smart-phone and to increase members knowledge and ability through projects, exhibitions and competitions, supported by talks and demonstrations. Young photographers especially welcome.

If interested in taking part, please e-mail Bob Stanborough (club secretary) at: shpcuk@outlook.com with your name and a daytime telephone number.

Royal Sovereign Bowls Club

Situated at the bowling greens in Princes Park, there is seating for non-bowlers and spectators around both of the greens.



Open daily from the end of April until end of September each year.

New members, whether new to the game or who have played previously, are welcome. Please visit our website for more details royalsovereignbowls.wordpress.com

Sovereign Harbour flickr Group

The Sovereign Harbour Eastbourne Group on flickr is an on-line public gallery to view and upload photos of Sovereign Harbour. Website: www.flickr.com/groups/sovereignharboueastbourne/

Sovereign Harbour Yacht Club Events

Friday, 7th October - Sunday 9th October

A poster for SHYC Power and Sail Cruising. The background shows a harbor filled with many sailboats. The text is overlaid on the image. On the left, it says 'SHYC Power and Sail Cruising' in large white letters. To the right, it says '7th-9th October Short Cruise in Company' in green and white. Below that, in smaller white text, it says 'May be the last chance we get this season for a short cruise to Brighton. All boats Sail, Power, Fishing welcome to come along and we'll have a bit of a party'. At the bottom left, it says 'Contact Andy and Kevin at: shycpowercruise@gmail.com' and 'group SHYC Power and Sail Cruising' with a Facebook icon.

SHYC Power and Sail Cruising

7th-9th October Short Cruise in Company

May be the last chance we get this season for a short cruise to Brighton. All boats Sail, Power, Fishing welcome to come along and we'll have a bit of a party

Contact Andy and Kevin at:
shycpowercruise@gmail.com
group SHYC Power and Sail Cruising

Saturday, 8th October at 8pm

A poster for a Rock N Roll event. The background is dark with a large, stylized red and blue microphone in the center. The words 'ROCK N ROLL' are written in large, bold, red letters with a blue outline. Above the text, there are musical notes. In the top left corner, there is a circular logo for the Sovereign Harbour Yacht Club. At the top, a red banner says 'Saturday 8th October 2022'. At the bottom, a pink banner says 'Join Peter and Jackie who will be teaching more moves to get you up on the dance floor. Don't worry if you are a beginner - they will teach you some basic moves to get you started.'.

ROCK N ROLL

Saturday 8th October 2022

Join Peter and Jackie who will be teaching more moves to get you up on the dance floor. Don't worry if you are a beginner - they will teach you some basic moves to get you started.

Monday, 16th and Tuesday, 17th October



Due to popular demand Bishops Valuations are back at the Yacht Club on Monday 17th and Tuesday 18th October 2022 from 10am - 3pm. Please bring along any unwanted or broken jewellery, watches working or broken, all silverware, cutlery and tea services, medals, oriental china or anything you may like an opinion on.

David looks forward to seeing existing and new customers. Please contact David Bishop on 07900 992 494 if you cannot make these appraisal dates.

Harbour Women's Institute (WI)

The Harbour branch of the W.I. meets on the second Monday of the month at 2:00pm in Sovereign Harbour Yacht Club. It also has a Craft Club with separate meetings.



If you are interested in taking part, please contact Frances Harrap on: 01323-472649.

Website: www.shra.co.uk/wi/

Harbour Exercise Classes

Mari-Anne is fully insured with a MSc in exercise physiology, specialising in clinical exercise and exercising with cancer.

Currently, classes are held virtually on Fridays: 9.15-10.10am Pilates.

Contact: Mari-Anne Elder
Tel: 07748 678030.
Email: mariandy@btinternet.com

Ward Councillor Surgeries

The Sovereign Ward councillors hold a surgery on the third Saturday of the month between 10.30am to 12.30pm in the Simply Italian restaurant on The Waterfront.

Sovereign Harbour Social Club

The Sovereign Harbour Social Club meets every Wednesday from 10:00am to 11:30am in the Simply Italian annex at The Waterfront for coffee. There are occasional outings for lunch, theatre, places of interest. All are welcome. For further details please contact Betty Saunders on 01323-479514. Website: www.shra.co.uk/shsc

Discounts for SHRA Members

The local companies listed below have kindly agreed to offer a discount to SHRA members on production of a SHRA Annual or Lifetime membership card. We hope this encourages you to support these local businesses.

Discounts are offered at the discretion of the proprietors. A typical discount is a 10% reduction. Terms and conditions may apply (e.g. may apply only to food or eating in and/or only on certain days or a limited number of persons). Please let us know of any difficulties.



- **Active Days Mobility Services.** Repairs and maintenance of mobility devices. 01424 532620 www.activedaysmobility.co.uk
- **AP-it.** Computer health-checks, upgrades, data backup. Tel: 01323 887894 www.ap-it.co.uk
- **Boatshed Brighton** - 10% off brokerage through Boatshed, Sussex' most highly rated yacht brokers. 079200 22540 timkingston@boatshed.com <https://brighton.boatshed.com>
- **CoCo Hair** - Hair and beauty salon. The Waterfront, Sovereign Harbour. Also require proof of Harbour address. 01323 471147 www.cocohair.co.uk
- **Curry Leaf Restaurant.** On eating-in food costs. 8 Susans Road. Tel: 01323 727900 www.just-eat.co.uk/restaurants-curryleaf-bn21/
- **Listening to You.** Discount on Counselling services. Strictest confidence. 07976 399 998 www.listening-to-you.co.uk
- **Pablo's Restaurant.** The Waterfront. On food costs only. No more than four persons Telephone: 01323 470400. www.pablos-eastbourne.co.uk
- **Planet Golf** - a 12-hole, space themed, glow in the dark mini golf course, located at 20, The Waterfront is pleased to offer SHRA members the discounted opportunity to play as many holes as you can in an hour between 11am-6pm midweek (Monday to Friday, not weekends nor bank holidays) for £5 on showing their SHRA membership card. [On Facebook...](#) [Planet Golf website....](#)
- **Revival Car Care.** Discount on car valeting services. Tel: 07507 899191 www.facebook.com/revivalcarcare/
- **Simply Italian Restaurant.** The Waterfront. Discount on food costs only. 01323 470911 www.simplyitalian.co.uk
- **Sea Training Sussex (STS).** On-line, shore-based and on-water powerboat and sailing courses. Discount on some training courses. Telephone: 07713 639066 www.seatrainingssussex.co.uk

Annual Membership of the SHRA is open to all households in owned or rented residential property located within the Sovereign Harbour estate, and owners of such residential property.

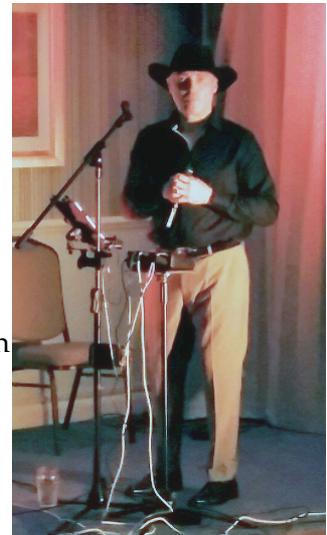
www.shra.co.uk/join

Harbour Friends Social Group

Crikey, where did that last two months go? At the time of writing there is the first taste of a cold morning nip in the air, so before we know it Winter will no doubt be upon us.

Since our last update, HF members have enjoyed the following events: Table Games Evening, a talk about Hurstmonceux & Greenwich Observatories, a coach trip to Portsmouth, and country singer John Lane back again by popular request.

Since 31st August, annual membership renewals have been taking place on Wednesday evenings, with the vast majority of members having already renewed. If you are a current member and have yet to renew, can you please arrange to do so before the end of October, or alternatively please let us know if you will not be renewing this year.



Events coming up for members over the next couple of months include: Group Tour of the Hippodrome Theatre, Autumn Disco Dance, Video Racing Night and a talk by Mr Neil Kirby the owner of Langham Hotel, Eastbourne. Also, we are hoping to arrange a group Tenpin Bowling session before the end of the year, in addition to our usual Christmas events of course.



If you are not currently a member of the group and reside on the harbour, why not arrange to come along and meet with us by prior arrangement at Sovereign Harbour Yacht Club, where we meet on Wednesday evenings from 7.30pm.

The annual membership fee has increased a little this year to £17.50 per person, but still represents great value for such an active group.

For further details please visit our website at: www.harbourfriend.co.uk from where you can also make contact with our membership secretary Sandie Goman by using the contact form. Sandie can then arrange for herself or one of the committee to personally welcome you and the very first visit is always considered to be just a taster, with no obligation or pressure at all to join.

At the moment due to increasing numbers, we are sorry that we are unable to accept any new “off harbour” persons as associate members.

We also have a Facebook page that is regularly updated with everything going on at Harbour Friends. The page is public, so can be viewed by anyone and no Facebook account is needed. The page can be found at the following weblink: www.facebook.com/harbourfriends/

That is about it for now and I would just like to take the opportunity to wish you all the best as we head from Autumn in to Winter, with the next update out just in time for Christmas.

Dave Hawkins

The Travel Concept

**WE ARE DELIGHTED TO INVITE YOU TO OUR
*HOLIDAY SHOWCASE 2022***

**Thursday, 13th October
From 4pm - 8pm
in the Royal Sovereign Suite
Sovereign Harbour Yacht Club**

Win a Fortnum and Mason Hamper

Attend our event to access exclusive offers and be in with the chance of winning a luxury Fortnum and Mason Hamper.

Presentation Schedule

4.10pm Danny will be talking about River Cruising

4.35pm Discover Maldives and Sri Lanka with Oli at Travel Gallery

5.05pm Find out more about luxury small ship cruising with
Donatella from Silversea

5.25pm Get a real insight into Africa with Zoe from Lusso

5.50pm A flavour of Canada with Shubhra from Prestige Travel

6.15pm Andrew will be taking you on a journey through Vietnam

6.40pm Latin America and Antarctica inspiration with
Jess from Latin and Polar Routes

Book a place at one (or more) of our holiday presentations and gain travel inspiration from around the world. Spend time chatting with our specialist trusted partners to discover lots of unique and incredible experiences and even start planning your next trip.

**Phone: 01435 866555 Email: ask@thetravelconcept.co.uk
www.thetravelconcept.co.uk**

Harbour Dolphins

Harbour Dolphins are a swimming / dipping social group in Sovereign Harbour. Currently enjoying the benefits of cold water swimming, we started the adventure in November 2021.



Harbour Dolphins get their kicks between the GROYNES opposite the Martello tower on North Harbour beach.

Membership. Now with 1047 members on Facebook, about 10 core weekday regulars, 17 core members at weekends and many more who have given it a go or are thinking about trying it. And not forgetting our furry companions who wait at the shoreline until we safely emerge.

SWIM TIMES

Weekdays 8am and about 5:30pm during the summer.

Weekends 9am. Bank holidays 9:30am

Until next time, just keep swimming..

St Richard's Church, Langney

St Richard's, Langney warmly welcomes all Sovereign Harbour residents to join us at any of our forthcoming events:-



Sunday 16th October 2022 (10.00am) – Cava & Cake after the service to celebrate St Richard's Church 65th anniversary.

Sunday 30th October 2022 - All Souls' Service – 4.00pm (A service of remembrance for all those departed)

Sunday 13th November 2022 – Remembrance Sunday Service – 10.45am (this service follows the regular 10.00am Mass and will be held on the lawn at the front of the church, weather permitting).

Saturday 3rd December – Christmas Fair & Christmas Tree Festival - 1.30 to 3.45pm followed at 4.00pm by our Community Carol Service. Christmas Tree Festival will also be open on Sunday 4th December – 11.30-4.00pm in the church.

Please feel free to join us for our regular church services on a Wednesday at 10.00am and Sunday at 8.00am or 10.00am, you will be warmly welcomed.

www.strichardeastbourne.org.uk

Update on the fascinating seals of Sovereign Harbour by Steve Savage, Sussex Seal Project

With the help of a handful of local residence, I have continued our daily monitoring to help build up a clearer picture of the seal ecology in the outer harbour. As mentioned in the previous article, the usual harbour seals have been rarely seen for a few months, instead the seals we are seeing are juvenile grey seals.

In particular we have been seeing three juvenile grey seals which I have identified as individuals and named SHG011, SHG012 and SHG013. While it is possible to identify these seals as individuals, I have not given these seals names, as the identification markings are good enough to recognise them in the harbour but not detailed enough to identify them when they move on.

SHG012 is reddish in colour due to natural temporary staining by iron in estuary mud. SHG013 is the smallest and most skittish of the three. These seals have been recorded hauling out on both the western beach and also central mud in the outer harbour. Occasionally one or two other grey seals have also been seen hauling out with the regular group of three greys.

Seals need to haul out undisturbed to rest and restore energy used while swimming and foraging. Seals will also haul out together for safety and so seals will usually be seen gathering together in the same area. While its not possible to know if these two additional seals are the same seals returning, I have been able to identify GingerB hauled out on the mud with SHG011,12 &13. GingerB was the reddish coloured seal that hauled out frequently on the RNLI gangway earlier in the year.

One possible reason for the increase in grey seals in the harbour may be due to general increase in grey seals in the area. A group of up to 22 grey seals have been seen near Rye harbour in recent months, a sub group of which have also been observed near Beachy Head.

If you have a sighting or a photograph, please do consider sharing with us as all sightings are valuable to help build up our understanding of these beautiful and fascinating mammals in the harbour and beyond. This can be done using our sighting email seawatch17@yahoo.co.uk or the Harbour Life Facebook Group. Please share as much detail as possible, but basic information include date, time, swimming/hailed out, where in the outer harbour you saw the seal. I hope this article answers some of your questions about seals and adds to your enjoyment watching these fascinating mammals. Thank you for your help.

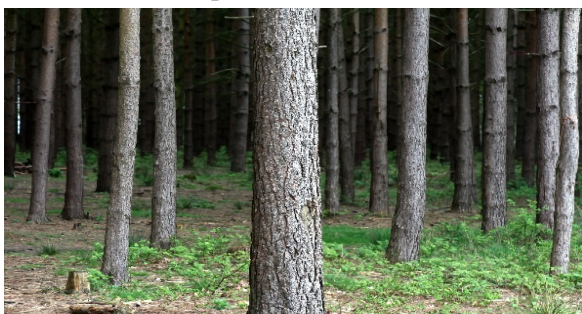
Stephen Savage
Sussex Seal Project



SHG011 (top) SHG012 (Mid) SHG013 (bottom)

Sovereign Harbour Photo Club

Sovereign Harbour Photo Club has had an influx of new people over the last few weeks and we now have 23 members. If everyone turned up at once we would have trouble all fitting into the Chartroom where we meet every Tuesday at 7pm. When we gather, with our drinks from the bar, we view each other's photos on the challenge topic of the week with friendly banter and constructive criticism. We are not competitive, just a group of people who enjoy taking photos and sharing that passion. Some use smartphones and others DSLR, what we use doesn't matter, it's our enjoyment of photography which is the key. Recent weekly challenges have been 'Trees', 'Men at work', and 'Gardens'. Here is a selection of our photos:



We also have a monthly competition through our Facebook site which currently has 139 members – why not have a look by searching for 'Sovereign Harbour Photo Club'? Here are a couple of photos posted recently, one a recent winner with lots of people 'liking' it is, of course, from 'Airbourne', and the other you will all recognise.



If you have an interest in photography and fancy joining a group of like-minded people, please get in contact. You don't need a fancy or expensive camera, (but if you have one that's fine), just a simple smart phone will do and we will do our best to help you get the best out of whatever you have. For more information email me, George Fisher (acting secretary), at: revgeorgefisher@gmail.com, or message our Facebook site, or just turn up.

The Green Room Productions

present

The Tyler Sisters

by Alexandra Wood.

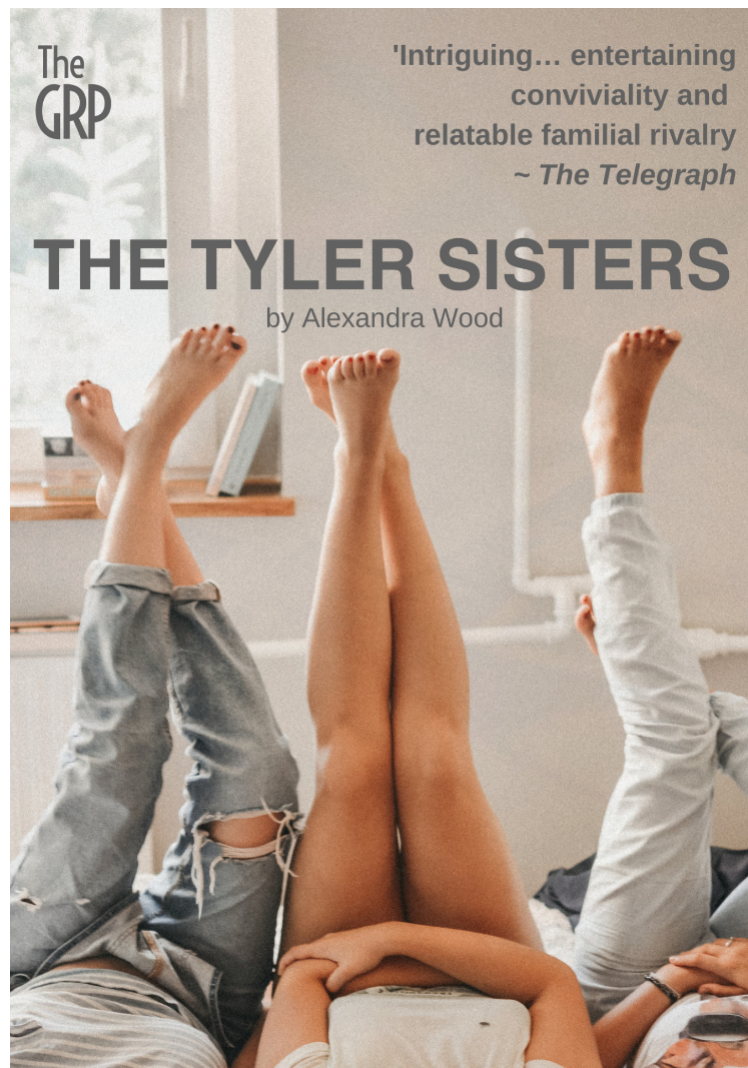
Three women, forty years, one ever-evolving bond.

For 40 years, the photographer Nicholas Nixon took a picture of his wife with her three sisters in the same formation, one image per year. His Brown Sisters series is the inspiration for Alexandra Wood's new play, enacted across the same length of time and with no hint of airbrushing. This innovative new play explores the deep and unruly waters of sisterhood. Fake sick days, Stonehenge, roller skates, champagne and glow-in-the-dark stars.

The Tyler Sisters is a funny, heartening exploration of time, and the unassuming moments that make up our lives. Alexandra Wood's innovative play explores the deep and unruly waters of sisterhood.

November 30th - December 4th at The Lamb Theatre, Old Town, Eastbourne

www.thegreenroomproductions.co.uk/the-tyler-sisters





If the oceans die, we die. That's a fact.

Moreover, plastic is entering our food chain and we're ingesting it. It is now in our blood stream.

The currents and layout of our bay, means that a lot of litter is washing up on our shores, from plastic bags and bottles from far to beer bottles thrown onto the sea at Langney Point.

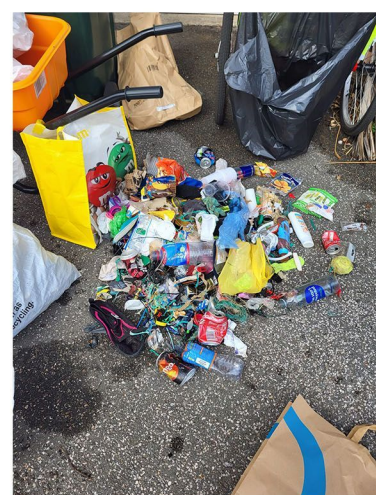
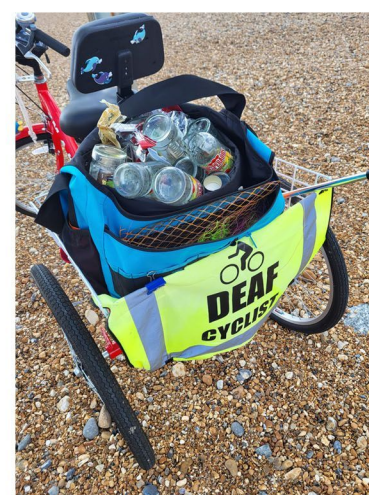
**HARBOUR
DOLPHINS**
EST 2021

Harbour Dolphins' members are doing their best to collect litter, from our beaches the group leader Morgan Martins is doing an excellent job by volunteering to do a beach clean up, every day, from 15 minutes to 2 hours, it all depends on his availability on that day, and he is encouraging more to do the same, even if it is just a small area, for example, a space between 2 groynes opposite your home! Morgan has collected vast amount of litter which includes fishing nets, vast amount of plastic and glass bottles, plastics wrappers and so on... its an endless list, including filled dog poo bags thrown onto the beach by residents. Please stop doing this. The bags get washed onto the sea, they deteriorate into tiny bits of plastic which are eaten by fish, and onto our blood stream from there.

If you would like to get involved, Morgan started a Facebook Group SH Ocean Patrol <https://www.facebook.com/groups/shoceanpatrol> for those that would like to get involved in beach clean ups and or signing petitions for the ocean and marine life.



**STOP
LITTERING
OUR
BEACHES!**





Havona NZ49 arriving at Sovereign Harbour with sea



RNLI 16-23 Eastbourne Lifeboat at Sovereign Harbour.



Marx Belle Charter Boat.



Eastbourne Pier.

Oliver's Postcards

A new set of eight professionally printed postcards for a £10 donation to Eastbourne RNLI

The colourful images have been drawn by talented, 13 year old Oliver from Eastbourne, who is autistic. His first set of cards raised over £1,200 for the RNLI. Email Anna to order & donate: blandanna62@yahoo.com



Wetwheels Solent chalet marine catamaran at Beachy Head.



Southdown bus PUF647 Guy Arab IV 5



Sea Leopard charters at sea off Brighton.



RNLI 13-13 Swanage Lifeboat at Old Harry Rocks.

custard
DESIGN MARKETING PRINT

Printed and supplied by Custard
and Bournefree

Bournefree
your local magazine